



ZETA PSI

EDUCATIONAL FOUNDATION

2018 ANNUAL REPORT



Greg McElroy

Celebrating Three Decades of Service to Zeta Psi's Annual Fund

Headquarters Staff

Executive Director

M. Lauck Walton
exec.dir@zetapsi.org

Associate Executive Director

Tyler Boisvert
boisvert@zetapsi.org

Director of Communications

Max Anderson
anderson@zetapsi.org

Director of Education and Conferences

Joseph Alessi
alessi@zetapsi.org

Director of Information

John Surufka
surufka@zetapsi.org

Senior Regional Education Consultant

Bill Weisenhorn
weisenhorn@zetapsi.org

Regional Education Consultant

Dominic LoPiccolo
lopiccolo@zetapsi.org

Fundraising Consultant

Barth Gillan
gillan@zetapsi.org

Accounting

Tony Hodgson
accounts@zetapsi.org



Greg McElroy's character as a Zete is encapsulated by his many friendships and close relationships accrued throughout his more than fifty years with Zeta Psi. Here Greg and his wife Bobbi enjoy the company of such close friends at Zeta Psi's annual NYC Founders Day Banquet.

Table of Contents

- 01** Fraternity and Foundation Staff
- 02** Meet the New President
- 03** Scholarship in Review
- 05** 1847 Pledge Campaign
- 07** Zeta Psi Leadership Training Institute
- 08** An Interview With Greg McElroy
- 11** Financial Statements
- 13** Capital Campaign Wrap-Up
- 15** Cumulative Giving Club

Contributors

Max Anderson
Editor in Chief

**Ira Berkowitz and
Monarch Communications**
Design and Publication

Randy Schein
Copy Editor

David Busacca
Contributor

Johnny Surufka
Contributor

Barth Gillan
Contributor

Greg McElroy
Contributor

Lauck Walton
Contributor

Joe Alessi
Contributor

Tyler Boisvert
Contributor

Bobbi McElroy
Contributor

Kevin Johnstone
Contributor

Stephen Halperin
Contributor

Hesham Omran
Photography

Stone Lyons
Photography

Meet the New President

By David Busacca (Lehigh '73)



History ignored is history repeated.

Every group wants to promote its newest, best, up to date, groundbreaking practices to assure its members that the group “gets it” and remains relevant and “forward looking”. And this is important for Zeta Psi too.

But a look back can often be an enlightening way to re-focus.

At the time Greek societies were being founded, the country was relatively new; higher education was almost exclusively for white, propertied, East Coast males who had to travel some distance to attend college. It truly was an elite group, but it almost never provided housing. As such, a 17-year-old moving away from home for the first time had to find accommodations within days of arriving at school.

Into this very singular milieu, some men saw a need to assist with these concerns that they originally faced and an opportunity to associate with men of similar interest and sensibilities. So began an experiment within higher education of a “secular” form of “social education” allowing young men destined to be the country’s professionals, industrialists, and teachers to form a group expressing their own high ideals and goals.

Obviously, a lot changed over more than 170 years. Now these fraternities look to its prior members to support those same goals, albeit modernized, with their time and treasure to allow those following them to experience the same. Zeta Psi Educational Foundation was the embodiment of that process (and the US Treasury’s tax code). The Foundation’s singular objective is to provide funding to realize those ideals of so long ago. This is done through direct scholarships for members, as well as programs that more formally expose members to experiences of leadership, supervision, responsibility, mutual support and tradition that our early founders knew were critical skills for “purposeful gentlemen” to succeed in society.

As all institutions progress, the Foundation needed more individualized giving support. Serendipitously, for 30+ years that was provided by Greg McElroy. Anyone who has been involved with Zeta Psi and particularly the Foundation in the last 40 years knows Greg and his tireless commitment to our funding efforts. Now our own Barth Gillan, past Phi Alpha and Montreal Zeta, is transitioning into that role. Welcome them when they call; tell them what your priorities are; listen to the proposed and existing programs Zeta Psi offers, and, hopefully, donate. Your donations are your input to this ongoing commitment effort to develop your brothers into the best men in our society.

Congratulations to David and the newly elected officers and trustees of the Educational Foundation. In August, they began a new mandate where the officers of the Educational Foundation are completely different from the officers of the Fraternity.

Board of Trustees

David Busacca

Lehigh '73
President

Tom Roerden

Cornell '83
Vice President

Will Woldenberg

Tulane '07
Secretary

Richard Breeswine

Penn State '87
Treasurer

Andrew Brain

Tulane '13
Trustee

Jon Ernesto

Seton Hall '04
Trustee

Phillip Gass

NYU '00
Trustee

Stan Gorski

Syracuse '86
Trustee

Les Hilger

Stanford '65
Trustee

Edmund Luciano III

Seton Hall '05
Trustee

John Spohn

RPI '81
Trustee

Edward Summers

Marist '04
Trustee

Dylan Thomas

UCLA '04
Trustee

Les Mann

Washington '73
Past President

Dan Homoncik

UOIT '10
Canadian Foundation Representative

2017-2018 Scholarship in Review

Written by Johnny Surufka (Illinois '13)

The following chapters have a specific fund dedicated to their chapter:

Alpha (Columbia)
Robert T. Goldberg Leadership Fund

Alpha Epsilon (Illinois)
Zahn Olmstead Endowment Fund

Alpha Pi (Virginia Tech)
Jud Browning Scholarship Fund

Delta (Rutgers)
Donald M. Moore Delta Fund,
Delta Endowment Fund

Eta (Yale)
Eta Fund

Kappa Phi (Cooper Union)
Kappa Phi Fund

Mu (Stanford)
Mu Endowment Fund

Nu (Case Western)
Nu Scholarship Fund

Omicron Epsilon (Princeton)
Omicron Epsilon Memorial Fund

Phi (NYU)
Albert Valentine Fund, Harold Finley
Fund, Virgil & Moody Gates Fun, Leila
& William Mackay Memorial Fund

Pi (RPI)
Pi Endowment Fund, Ira Richer Fund

Psi (Cornell)
Burkhardt Family Scholarship Fund,
Psi General Fund, Tom & Donna
Jewett Scholarship Fund

Psi Epsilon (Dartmouth)
Frederick Cole Endowment Fund

Rho (Middlebury)
Baldwin/Landon Memorial Fund

Rho Alpha (MIT)
Owen M. Williams Fund

Sigma Gamma (NC State)
Sigma Gamma Fund

Sigma Phi (UIC)
T. Ryan Sigma Phi Fund

Sigma Zeta (UCLA)
Sigma Zeta Scholarship Fund

Tau Delta (Lehigh)
Tau Delta Elders Fund

Tau Gamma (Purdue)
Tau Gamma Scholastic Achievement Fund

Zeta (Williams)
Lt. F. Kendall Mitchell (USNR)
Scholarship Fund

Over the past 74 years, the Zeta Psi Educational Foundation has awarded scholarships to deserving students in the United States. The Foundation is funded in part by our Fraternity's generous donors.

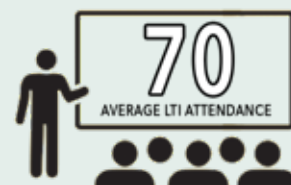
This past academic year, the Zeta Psi Educational Foundation awarded \$40,000 in general scholarships in addition to \$10,000 in chapter-specific funds to over 100 applicants. These awards, ranging from \$250 to \$1,000, are given based on academic excellence, leadership in Zeta Psi, involvement in other campus activities, and financial need. With the ever-rising costs associated with higher education, their impact cannot be understated. To quote one recent recipient: "I'm incredibly grateful to receive this scholarship award and cannot thank Zeta Psi enough for helping to make my college experience more affordable. It means a lot to me."

Applications open early in both the fall and spring academic semesters and can be accessed at www.zetapsi.org/scholarships. Zeta Psi's Scholarship Committee, led by Clay Albers (Iota Alpha '02), reviews all submitted applications and determines the most worthy. Elders interested in volunteering for the committee should contact Zeta Psi's Executive Director.

Your Support Makes This Possible



\$152,877
TOTAL SPENT ON HOSTING
REGIONAL LTIs



\$56,250
TOTAL SCHOLARSHIP
DOLLARS AWARDED

108 INDIVIDUAL
SCHOLARSHIPS
GRANTED

2017-2018 Scholarship in Review

Zeta Psi Educational Foundation

General Scholarships Awarded

Fall 2017/Spring 2018

| First Name | Last Name | Chapter | First Name | Last Name | Chapter |
|-------------|------------|---------------------------------------|-------------|-------------|---|
| Patrik | Anderson | Princeton University | John | Marshall | Princeton University |
| William | Beichner | American University | Alec | McFarlin | American University |
| Harrison | Blarr | American University | Logan | Mendelson | Worcester Polytechnic Institute |
| Julian | Bustillo | Tulane University | Gabriel | Mennesson | New York University |
| Collin | Campbell | University of Maryland | Joseph | Molinari | Binghamton University |
| Kyle | Cassara | Georgetown University | Anthony | Mower | Worcester Polytechnic Institute |
| Juan Pablo | Castella | University of Chicago | Mateen | Nemati | The Cooper Union |
| Andrew | Chen | University of Minnesota | Jonathan | Nghiem | University of Minnesota |
| Christian | de Abreu | University of Pennsylvania | Jack | Nigro | Worcester Polytechnic Institute |
| Dominick | De Lucia | American University | Shane | O'Brien | University of Illinois |
| Bryan | Deneen | Georgetown University | Peter | O'Leary | Dartmouth College |
| Michael | Dib | University of Maryland | Glory | Okwori | Other / Not Listed (Non-Brother) |
| Tianhang | Dong | Dartmouth College | Brian | Parker | University of Washington |
| Sebuabe | Dzobo | Rensselaer Polytechnic Institute | Eric | Plaut | Dartmouth College |
| Alexander | Epprecht | New York University | Alec | Reginato | University of Minnesota |
| Ratul | Esrar | University of Chicago | Dennis | Reilly | Dartmouth College |
| Neilesh | Frings | Pennsylvania State University | Norman | Reyes | University of Illinois |
| Seth | Gainsburg | Cornell University | Bryce | Rogers | American University |
| Parkash | Garcha | Marist College | Giovanni | Sanchez | The Cooper Union |
| Daniel | Greenberg | Binghamton University | Christopher | Santos | Binghamton University |
| Joseph | Grekoski | Binghamton University | Aidan | Smolar | The Cooper Union |
| Ethan | Halom | University of Illinois | Ryan | Spalding | New York University |
| Dalton | Hegeholz | Nebraska Wesleyan University | Matthew | Sperle | University of Minnesota |
| Bryan | Hingerton | University of Maryland | Nicholas | Stout | University of Michigan |
| William | Huang | New York University | Klevis | Tefa | New York University |
| Zachary | Hubert | Pennsylvania State University | Nathaniel | Teitler | Nebraska Wesleyan University |
| Brian | Huff | American University | Peter | Tran | Dartmouth College |
| Nikhil | Iyengar | The Cooper Union | Alex | Tsolmon | University of Washington |
| Shivam | Khanna | University of Maryland | Timothy | van Dover | Cornell University |
| Shreyaan | Khetarpal | New York University | Matthew | Van Wagenen | Seton Hall University |
| Shane | King | Marist College | Miles | Vinikow | University of California, Santa Barbara |
| Thomas | Koch | The Cooper Union | Alex | Vraspir | Nebraska Wesleyan University |
| J Isaac | Krieger | University of Minnesota | Katarina | Walther | American University |
| Anthony | Kuykendall | American University | Andrew | Ward | Georgetown University |
| Alexander | Kyriakides | New York University | Jordan | Wells | American University |
| Myung Chang | Lee | Dartmouth College | Vincent | Wenzel | University of Illinois |
| Joshua | Lee | Dartmouth College | Erik | Widjaja | University of Minnesota |
| Austin | Leikvoll | University of Minnesota | Ry | Wiese | University of Minnesota |
| Josiah | Lucas | University of Minnesota | Michael | Wilkinson | Worcester Polytechnic Institute |
| Michael | Lucatorto | American University | Grant | Williams | American University |
| Cowboy | Lynk | Massachusetts Institute of Technology | Andrew | Williamson | Virginia Tech |
| Michael | Mangia | New York University | Tyler | Wilson | Worcester Polytechnic Institute |
| Jake | Mania | American University | Graham | Wobig | Virginia Tech |
| Tyler | Marsh | Worcester Polytechnic Institute | | | |

1847 Pledge Campaign

By Barth Gillan (McGill '85)



Geoff McElroy (WPI '01), Alex Pruce (Cornell '13), Barth Gillan (McGill '85), and Chris Romano (American '20) pose with the championship belts on behalf of their chapters.

In 1847, three young men founded our fraternity to allow young men at college the opportunity to learn and grow through brotherhood. In 2017, the 170th anniversary of Zeta Psi was celebrated with the launching of the 1847 Pledge Campaign – a campaign that reached out to all brothers. This campaign was intended to ensure that young men at college could continue to learn and grow.

The concept was simple: donate \$18.47 in honor of Zeta Psi. The proceeds raised would be used to support the Leadership Training Institute (LTI) at the annual convention – an experience that leaves every participant better prepared to face the up-and-coming academic year.

The campaign was launched on June 1st, 2017 and ran for 18 days, ending at 18H47 on June 18th. During this campaign, 579 donors contributed \$22,591.79 to support education for members of Zeta Psi. Although many people contributed \$18.47, some generous brothers moved the decimal place and increased their support. Other brothers opted to recognize the Fraternity's anniversary by donating \$170 (\$1 for every year). The Chapter that won the 1847 Pledge Challenge -- with 73 brothers participating -- was the Beta Tau Chapter at Tulane University.

In 2018, the 1847 Pledge campaign was repeated, but feedback from the participants in 2017 suggested that we move the timing away from the summer. So, the 2018 challenge launched on March 27th,

1847 Pledge Campaign (Cont.)



Barth Gillan accepting the "Top Canadian Chapter" belt on behalf of the McGill Chapter.



The Cornell Chapter accepting the championship belt for the 1847 Pledge.

which is the anniversary of the founding of the Theta Xi Chapter at the University of Toronto – an act which made Zeta Psi the first international fraternity. Regardless of nationality, this Zeta Psi first is a point of pride for every member of our brotherhood. It has continued to inspire Zeta Psi as we have expanded overseas to new chapters. During the 2018 weeklong campaign, 496 brothers showed their pride in Zeta Psi by participating and contributing \$23,130.88 towards membership education for Zetes.

This year, recognizing that membership is not always equal between chapters, categories were created to 'level the playing field' between chapters. The Alpha Psi Chapter (McGill) threw down the gauntlet for all Canadian chapters. A Young Chapter category was created in which we recognized those Chapters with a history of less than ten years. To counter the Canadian challenge, a winner for the United States was also identified. However, please note that all of these categories were runners-up to the overall champion.

The winners for the 1847 Pledge Campaign (2018) were recognized at the convention in Ithaca in August.

Thank you to all of our participants - they're recognized on pages 15-18.



The Delta Chi Chapter recognized as the "Young Chapter" champion.



The Pi Tau Chapter accepting the "Top American Chapter" belt.

Zeta Psi Leadership Training Institute: 2017-2018

By Joe Alessi (Maryland '11)

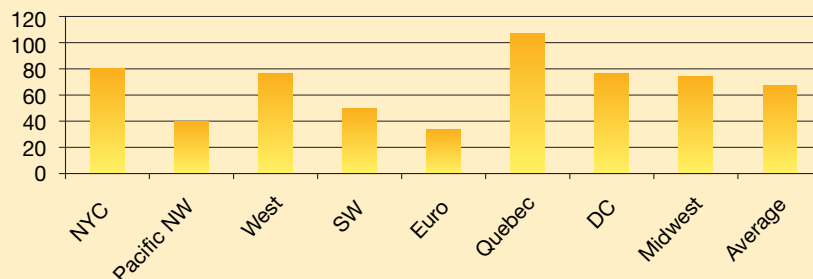


During the 2017-18 academic year, the Zeta Psi Educational Foundation furthered its efforts to provide the highest quality membership development training to its undergraduates. Between September 2017 and April 2018, Zeta Psi's Regional LTI program reached 549 undergraduates through eight events that spanned three countries and two continents. Total attendance has ticked up from 2016-17 and average attendance continues to improve for the sixth consecutive year.

2017-18 is also the first full year that the evolved Regional LTI model was adopted. As we traded classrooms for conference centers and small towns for major metropolitan areas, the Regional LTI program was able to tap into our formidable Elder Zeta network. By leveraging elder proximity, the program devoted one-third of its programming to active-elder collaborative sessions, which paired groups of undergraduates with elder advisors to complete highly interactive activities in the risk management and professional development spaces.

In 2016-17, it was noted that the proposed changes in the LTI format would represent the future of the Regional LTI program: well-attended and geographically-varied professional development events that are delivered within the financial means of the organization as part of a holistic membership educational experience. During the 2017-18 academic year, that future has begun to be realized.

Attendees Per LTI



An Interview With Greg McElroy

Celebrating 30 Years of Service to the Annual Fund

Interview transcribed by Tyler Boisvert (Seton Hall '10)

Greg McElroy has meant more to Zeta Psi than anyone else over the past 50 years. I've been fortunate that when I joined the board in 2009 as the Undergraduate Board Representative and then as I continued as a staff member in 2010, that I've been able to consider Greg a close friend, mentor and brother. So that everyone in the brotherhood can understand what this man has meant to Zeta Psi, I decided to ask him a variety of questions that led him to tell us all about his service, dedication and involvement throughout the years.

Questions

1. After receiving your undergraduate degree at NYU, why did you want to work for Zeta Psi?

My more than 25-year tenure as staff member of the Zeta Psi Headquarters — which was called the Zeta Psi Central Office when I began my association with the International organization — began in my fifth year as an NYU student in its uptown campus, which was then in the Bronx. At that time, the leaders of the staff needed someone to work in the back office of the Central Office — primarily to run its addressograph system, which was the way that Zeta Psi's Elder database was managed in the pre-technology era. We communicated through direct mail and The Circle magazine distribution to our alumni members. As I was about to graduate in the spring of 1971, I was offered the job as the only Chapter Consultant for the Central Office. I visited all of the 40-plus chapters throughout North America during the 1971-72 school year. I did not actively seek to work for Zeta Psi, but rather was a beneficiary of being the right Zete at the right time.

2. How long have you been in charge of the Annual Fund program for the Zeta Psi Educational Foundation? When did you transition to being a contractor for the Annual Fund?

I began my Annual Fund management in the 1980s. When I left my full-time position as Zeta Psi's Executive Director in 1996, I continued to manage Zeta Psi's Annual Fund program as part of my client relationship with the firm I had just joined. When I started my own fundraising consulting firm in 2000, I entered a formal consulting relationship with the Zeta Psi Educational Foundation to continue managing the Annual Fund, which continued until this year when that management function was given to Barth Gillan, who became Zeta Psi's major staff development person.

3. What has been your favorite part of working for Zeta Psi?

There are so many enduring memories of my quarter-century tenure with Zeta Psi and there is no one favorite aspect of that part of my professional life. I would guess the most endearing part of my 48 years of association with the International Fraternity is the satisfaction of having made close (and in many cases, lifetime) friendships with hundreds of Zetes from chapters throughout the USA, Canada and the British Isles. In my early years, my strongest memories are centered on rebuilding Zeta Psi's chapter roll from a low of 32 in the early '70s to the mid-40s by the early 1980s. In the 1980s and early 1990s, some of my strongest memories revolve around the significant growth of Zeta Psi's endowment fund. I spent more of my time involved in fundraising activities. On a more personal and emotional basis, I would rate the initiation of my only son Geoffrey, which I attended, as a highlight of my last few years as Zeta Psi Executive Director.



Another key to Greg's career is the support that he has received from his three children. During the 1993 convention, Greg was seated at a baseball game with daughter Stephanie, Bobbi, and son Geoffrey (WPI '01). Greg's oldest daughter Christy was not at that convention, but joins her sister and brother as parents of Greg and Bobbi's eight grandchildren.

4. McElroy and Associates consist of you and your amazing wife Bobbi. What has Bobbi meant to Zeta Psi and to you over the years?

I met my wife Bobbi in the spring of 1972 at a small party I had arranged for some Zetes in New York City when Phi Alpha Jim McLaughlin was visiting, and we have been a couple ever since then. We were married in 1974. There is simply no way I could have ever continued to work for Zeta Psi as its chief operating officer for 25 years without her support. But, since she had a highly successful career as a retail executive (which involved frequent travel all over the world) I was an important partner to her as I often managed some primary care for our three young children while she moved up the corporate retail

An Interview With Greg McElroy (Cont.)

ladder—primarily with Toys”R” Us and Babies”R”Us—until she retired from that job in 2005. She then joined my firm, McElroy & Associates, as my partner and chief office administrator. We have worked together as a team for over ten years. Bobbi has been almost as important to Zeta Psi as I may have been as she has been an integral part of Zeta Psi’s IHQ operations for many years, especially in regards to the Annual Fund and other capital development programs – which I had managed for over three decades. We are truly blessed as a couple as we are not only happily married, but best friends as well.

5. **If you could share any one piece of wisdom to donors over the last 35+ years, what would you say to them?**

Never forget what Zeta Psi meant to you as an undergraduate. Hopefully it had a positive influence on your life and professional career. What is true for so many of us is that some of the best friendships of our lives were formed and matured during our fraternity experience. This is one of the many reasons why thousands of Zetas choose to contribute to both their local chapters and the International Fraternity. It is only through the generosity of so many Elders over the years that Zeta Psi has the financial resources to support its operations and the many programs that make us as strong as we are today.

Capital Campaigns

6. **This last Capital Campaign declared victory with 3.5 million dollars raised -- mostly for membership education. So first off, congratulations. How important do you think membership education is to the future and how did you decide upon membership education as a goal?**

First of all, thank you for your congratulatory comment regarding the successful outcome of the Campaign for Zeta Psi: Building Strong and Honorable Leaders. This campaign had its roots in the expansion of Zeta Psi’s membership development program – which began in 1980. It then grew significantly with Maurice Ducoing’s oversight when he became that committee’s chairman and championed the program’s huge growth throughout the past two decades. So, when then-Phi Alpha Andy Nunez approached me in 2013 and asked me to engage in the initial stages of a capital campaign (primarily to provide a permanent endowment for this educational program) I found a high degree of interest and financial support within Zeta Psi. Most of the \$3 million-plus contributed to this latest campaign was directed to educational programming, so I truly believe this will help support the most transformative and educational Zeta Psi programming for decades to come.

7. **Challenging question - when do you think the next Capital Campaign should be started?**

It’s hard to predict. There have been three major gift programs within the International organization in my time: the Campaign for Endowment, which was conducted in the early 1980s. This Campaign employed a combination of current gifts that were paid over five years or less. It was dominated by deferred gifts. In the mid-1980s, I was the chief fundraising professional and raised \$500,000 to purchase and endow the International Headquarters property in the NYC suburb of Pearl River, New York. During the ramp-up to Zeta Psi’s 150th convention – which was held in New York in 1997 -- a program to widely promote deferred giving was launched and is known as the Heritage Society. It had 150 charter members. And most recently I had a hand in completing the Campaign for Zeta Psi, which was mentioned earlier. If I was to predict a logical timeframe for the next capital campaign, it might be around the time of Zeta Psi’s 175th anniversary in 2022.



Greg receiving his Distinguished Service Award at the New York City Convention in 2011.

Heritage Society

8. **The Heritage Society was founded in 1997 and now consists of over 400 members. How did you come up with the idea to celebrate the 150th Anniversary of Zeta Psi?**

As mentioned previously, the Heritage Society concept arose out of the positive response to the successful outcome of deferred giving contributions — mostly bequests from Elders, but also some insurance gifts — prior to and following the 1980s Campaign for Endowment. The major attribution for the Heritage Society idea belongs to an early IHQ staff member who worked for me, Jack Doyle, Tufts ’76. Jack served on Zeta Psi’s Board in the mid-1990s and has become a major figure in the direct mail fundraising profession in his field.

9. What are you hoping the Heritage Society will accomplish for the Educational Foundation?

In the years since the first 1980s major gifts campaign, the Heritage Society has already added at least \$5 million to the endowment of the Zeta Psi Educational Foundation with more than 50 bequests. It will add just as much as — if not more than — \$10 million in the next ten to twenty years. These added funds will allow Zeta Psi to provide funding for more programs and services to over 50 chapters and our 30,000-plus active and elder Zetes.

Legacy

10. You've graced Zeta Psi with being Phi Alpha of the Fraternity and Foundation President from '06-'08. How impressed were you with those on the board?

I was privileged to serve as Phi Alpha CXXXI in 2006-07 and 2007-08. It was a wonderful two years of my life and was during a period of relative calm in our long history. I was blessed with many dedicated Board members who exemplified the Three T's; each Board member contributed copious amounts of Time, Talent and Treasure throughout my tenure as Phi Alpha and in all the years that I have served Zeta Psi. The most noteworthy event in my two years as Phi Alpha was the privilege of presenting a Zeta Psi charter to the charter members of our Iota Omicron Chapter at Oxford University in the spring of 2008. This was a sort of bold experiment for Zeta Psi -- to see if we could bring the concept and traditions of the North American Greek system across the Atlantic to a group in the UK. Therefore, it was a special event for me this past April when I returned to London to celebrate the Oxford chapter's 10th anniversary.

11. What do you want people to remember about your time working, running and volunteering for the Zeta Psi Educational Foundation?

I realize that my service to Zeta Psi is probably historical in nature, as my service as Zeta Psi's chief operating officer was the longest in our history. My attendance at 48 straight Zeta Psi annual conventions is also a record. But more-so, I hope I will be remembered as the one who, following one of the most disruptive periods for the Greek system, grew Zeta Psi's chapter roll in the 1970s. I'd also like to be remembered as the one who helped substantially improve the financial health of both the Zeta Psi Educational Foundation and Zeta Psi Fraternity. I tried to conduct both my professional and volunteer careers with Zeta Psi with honor and brotherly love.

12. You've had a long and distinguished career to be proud of - is there any one thing that comes to mind that you would liked to have done differently?

This is a hard question to answer, as I believe I avoided major controversies and hardships since 1971, which is when I became Zeta Psi's Executive Director. I always regretted whenever any chapter under my watch was forced to become dormant, which happened for a variety of reasons. In retrospect, some of those closings were unavoidable, but they still left a negative mark on me whenever those closings took place.

13. Any last thoughts?

I guess my last thoughts revolve around two central themes: the influence that a happy marriage and family life can have on one's success or failure in his/her professional life, and the stark realization that success in the world of non-profit organizations is dependent on the dedication, generosity and scope of service of the organization's members throughout each and every generation. I have had more than my share of an abundance of fortune in these areas and I wish to extend my brotherly love to the hundreds of Zetes — both living and deceased — who have helped shape my years of service to Zeta Psi and to so many of whom will remain close to me until I die.



As is the case with any Zete, the bonds of brotherhood are formed during one's days as an active. Shown here with Greg at the 1986 Boston Convention are Greg's NYU Brothers Bob Pirraglia ('69), Bill Reiner ('69), and Dave O'Brien ('70).

Greg's service to Zeta Psi was too much to capture on these three pages. To read the full interview, visit zetapsi.org/mcelroy

This interview is being released in conjunction with the Legacy Project video series highlighting Greg McElroy. Visit Zeta Psi's YouTube channel to view the full video: youtube.com/ZetaPsiFraternity

Financial Statements

Zeta Psi Educational Foundation continues to use its resources wisely to help meet its mission through effective programs and direct financial support. The Foundation carries a long tradition of outstanding financial stewardship which continues to the present.

Compared to Our Peers

The Foundation benchmarks itself against other “Fraternity” Educational Foundations using publicly reported data on the IRS Form 990.

Net Assets -- Over the past 15 years, Zeta Psi’s net assets have grown 193%. The most recent results show that our net assets are near the middle of the results for the 54 Foundations analyzed. Our net assets are within 1% of the mean and about one-third higher than the reported median. As a fraternity with fewer chapters we are pleased with our long-term performance and growth in net assets.

Programming -- Zeta Psi has continued to grow the total dollars and percentage of revenues used to support our programs. We intend to continue to increase dollars used to support of our programs in the coming years as our endowment grows and we identify new donors to add to our ability to deliver insightful and needed programs to enrich the undergraduate experience.

Fundraising Expenses -- Zeta Psi has consistently delivered efficiency in Fundraising, choosing to put more into our programs, but we are being outpaced by our peers who are not afraid to invest in order to raise money. The Board intends to invest a few more dollars on the margins to entice new donors and to improve our outreach to our existing donors, all of which will have a positive impact on our undergraduates due to more resources for programs.

Financial Management

The Foundation Board constantly balances between immediate program needs and long-term stability. Historically, the Foundation spent no more than 5% of the available endowment funds on programs. However, starting in 2016, the Foundation began to taper the draw down with a plan to reach a 4% draw per annum by 2020. The Board believes that the more conservative draw makes sense in the current low interest and inflation environment.

The Board has noted the growth of designated and chapter-specific funds over time. The Board now requires a minimum of \$25,000 to initiate a designated fund. All funds should then disburse at least 4% of their values each year. Proceeds that are not in use in the previous year are then released to the general fund in the next fiscal year. The Board believes that this strikes an appropriate balance between current needs and building for the future as it encourages chapters to grant scholarships, support the LTI program, or to request housing grants each year so that the intended recipients benefit from the generous gifts by Elder donors now and into the future.

The Board has continued to select AllianceBernstein as our investment advisor. The investment oversight committee is pleased with the services and the costs associated with our portfolio. The Board’s current portfolio asset allocation is 70% equity and 30% debt. The Board has selected Berard and Associates as its independent auditor and is pleased to report an unqualified return. Foundation members that attended the annual meeting received a copy of the audited statements. Any member that would like a copy may request it from the International Headquarters.

Zeta Psi Educational Foundation

Condensed Audit Results

for the years ended May 31, 2018 and 2017

| Assets | 2018 | 2017 |
|---------------------------------------|-------------|-------------|
| Total Current Assets | \$64,888 | \$125,726 |
| Investments at Market Value | \$6,522,488 | \$6,156,194 |
| Total Property and Equipment | \$113,387 | \$124,488 |
| Other Assets | | |
| Due from Zeta Psi Fraternity, Inc. | \$169,422 | \$32,950 |
| Pledges Receivable | \$366,802 | \$734,956 |
| Loan Receivable | \$17,797 | \$21,245 |
| Painting | \$5,000 | \$5,000 |
| Cash Surrender Value - Life Insurance | \$298,712 | \$293,187 |
| Total Other Assets | \$857,733 | \$1,087,338 |
| Total Assets | \$7,558,496 | \$7,493,746 |
| Liabilities and Net Assets | 2018 | 2017 |
| Total Current Liabilities | \$14,093 | \$28,664 |
| Unrestricted Net Assets | \$4,572,363 | \$4,673,285 |
| Temporarily Restricted Net Assets | \$2,004,038 | \$1,840,427 |
| Permanently Restricted Net Assets | \$968,002 | \$951,370 |
| Total Net Assets | \$7,544,403 | \$7,465,082 |
| Total Liabilities and Net Assets | \$7,558,496 | \$7,493,746 |
| Revenue | 2018 | 2017 |
| Net Investment Revenue (Loss) | \$491,238 | \$579,712 |
| Contributions | | |
| Annual Fund | \$364,253 | \$414,784 |
| Capital Campaign Gifts | \$158,819 | \$28,251 |
| Net Capital Campaign activity | \$(174,054) | \$(47,011) |
| Total Contributions | \$349,018 | \$396,024 |
| Other Revenues | \$17,941 | \$18,192 |
| Total Revenue | \$858,197 | \$993,928 |
| Expenses | 2018 | 2017 |
| Program Services | \$537,429 | \$482,855 |
| Management and General | \$151,952 | \$148,828 |
| Fundraising | \$89,494 | \$90,456 |
| Total Expenses | \$778,876 | \$771,789 |
| Change in Net Assets | \$79,321 | \$271,793 |
| Net Assets Beginning of Fiscal Year | \$7,565,081 | \$7,193,292 |
| Net Assets End of Fiscal Year | \$7,544,402 | \$7,485,081 |

Capital Campaign Wrap-Up

By Barth Gillan (McGill '85)

In June 2014, with a goal of \$3MN, The Building Strong and Honorable Leaders Campaign was launched to raise money to support the Membership Education Program offered by the Zeta Psi Educational Foundation. The campaign set out to ensure that Zeta Psi has the resources to continue to improve the membership education provided to young men through the Leadership Training Institute (LTI).

During the Convention in Ithaca, NY in August 2018, it was announced that the campaign had surpassed its original goal, even surpassing the modified goal of \$3.5MN, and the campaign was declared a success. Thank you to the many donors who supported this campaign, most of whom maintained their Annual Fund support during the campaign to ensure that the regular activities of the Educational Foundation were not compromised during the campaign.

This campaign would not have succeeded without the leadership of Stuart Bowers and Greg McElroy, as well as the support of the campaign volunteers. Most important, however, is the ongoing belief of the donors that mission of the Zeta Psi Educational Foundation is vitally important for young men.

Founding Leaders Society - \$500,000 and Above

| | | |
|---------------------------|-----------|------|
| Theodore W. Brickman, Jr. | Illinois | 1955 |
| James J. Ljunglin CXXI | RPI | 1957 |
| Alan R. Rice | Minnesota | 1950 |

Diamond Leaders Society - \$250,000 - \$499,999

Anonymous

Platinum Leaders Society - \$100,000 - \$249,999

| | | |
|-----------------------------|-------------|------|
| D. Stuart Bowers | Maryland | 1981 |
| William C. Buck | Lafayette | 1950 |
| Kenneth Burkhardt | Cornell | 1967 |
| Douglas P. Donaldson CXXIII | Connecticut | 1972 |
| Michael J. Freiman CXXVII | Maryland | 1978 |

Gold Leaders Society - \$50,000 - \$99,999

| | | |
|--------------------------|------------|------|
| James Donald | Western | 1982 |
| Philip Gass | NYU | 2000 |
| Leslie G. Hilger, Jr. MD | Stanford | 1965 |
| Allen Hobbs | RPI | 1991 |
| Gary L. Mootz | Penn State | 1963 |

Silver Leaders Society - \$20,000 - \$49,999

| | | |
|-------------------------|--------------|------|
| Douglas S. Boothe | Princeton | 1986 |
| David W. Busacca CXXXII | Lehigh | 1973 |
| Ronald Cass | Case Western | 1984 |
| George D'Angelo | Maryland | 1978 |
| John T. Doyle | Tufts | 1976 |
| Bruce Eckstein | Case Western | 1960 |
| John Ellis | UCLA | 1981 |
| Edward Etes | RPI | 1959 |
| Adam J. Fechter | Maryland | 1991 |
| Tony Hodgson | Toronto | 1983 |
| Les Mann III CXXVI | Washington | 1973 |

| | | |
|--------------------------|--------------|------|
| Gregory E. McElroy CXXXI | NYU | 1970 |
| Ronald E. Miller PE | Case Western | 1969 |
| Andrew M. Nunez CXXXIV | Texas | 1994 |
| Robert J. O'Donnell CSP | MIT | 1985 |
| Thomas P. M. Roerden | Cornell | 1983 |
| Daniel Wambold | MIT | 1992 |

Bronze Society - \$10,000 - \$19,999

| | | |
|-------------------------|-------------|------|
| Dwight Anderson | Princeton | 1989 |
| Edison W. Dick CXIV | Yale | 1959 |
| James Forese | Princeton | 1986 |
| Barth H. Gillan CXXXV | McGill | 1985 |
| Stephen M. Halperin | Tulane | 1984 |
| M. David Hunter CXXX | Texas | 1980 |
| Andrew L. Jones | UCLA | 2003 |
| Stuart T. Moy | NYU | 1981 |
| Scott Pedersen | Cornell | 1990 |
| Robert Pirraglia | NYU | 1969 |
| Alva "C.R." Roberts | Washington | 1970 |
| Steven H. Rogers | Connecticut | 1973 |
| Jay L. Rothberg CXIX | American | 1969 |
| M. Lauck Walton CXXXIII | RPI | 1984 |

Circle Society - \$5,000 - \$9,999

| | | |
|------------------|------------|------|
| Anthony Abbate | NYU | 2007 |
| Anthony Barkan | Princeton | 1988 |
| Tyler Boisvert | Seton Hall | 2010 |
| John D. Clark | Princeton | 1987 |
| Brant Davis | Illinois | 2008 |
| Timm DesRoches | Alberta | 2008 |
| Thomas A. Dippel | Princeton | 1993 |
| Maurice Ducoing | Cornell | 2003 |
| Jon English | UCLA | 2006 |
| John S. Failla | Maryland | 1978 |
| Stephen Golden | Princeton | 1990 |

Capital Campaign Wrap-Up

| | | |
|---------------------|-------------------|------|
| Brandon Jang | UCLA | 2008 |
| R. Thomas Jewett | Cornell | 1961 |
| Robert Kackley | Virginia Tech | 1987 |
| MacLane C. Key Esq. | | |
| Robert Kravacs | Connecticut | 1977 |
| Bob Lugari | Syracuse | 1985 |
| Jay Maguire | Texas | 1992 |
| Brian Moloney | Yale | 1993 |
| Kraig Prange | Nebraska Wesleyan | 1993 |
| Evan Pressman | WPI | 1984 |
| Anthony Richardson | WPI | 2009 |
| William Ruggles | Connecticut | 1974 |
| Senth Sivakumaran | Toronto | 2015 |
| Lawrence Tannas | UCLA | 1959 |
| Adam Wasserman | Claremont | 1994 |

TKPhi Society - \$2,000 - \$4,999

| | | |
|-------------------|-----------|------|
| Benjamin Bissantz | Cornell | 2011 |
| Kevin Canavan | Lafayette | 1976 |

| | | |
|--------------------------|--------------|------|
| Edward A. Deusch | Princeton | 1991 |
| Thomas P. Herbell PhD | Case Western | 1956 |
| Edmund (Lou) Luciano III | Seton Hall | 2005 |
| Brian McCready | Calgary | 1999 |
| Geoffrey McElroy | WPI | 2001 |
| J. Corey Nicholson | Toronto | 1979 |
| Lorne Sobczyk | Calgary | 2008 |
| John Spohn | RPI | 1981 |
| Jared Sunshine | Columbia | 2004 |
| Dylan Thomas | UCLA | 2004 |
| Will Woldenberg | Tulane | 2007 |

Zete Society - \$1,000 - \$1,999

| | | |
|-----------------------|------------|------|
| Dean Cummings | Minnesota | 1992 |
| Jonathan Ernesto | Seton Hall | 2004 |
| George "Whit" Holcomb | Virginia | 1976 |
| Adam Wisniewski | Claremont | 1994 |

Zeta Psi Capital Campaign Committee

James J. Ljunglin
RPI '57
Honorary Chairman

D. Stuart Bowers
Maryland '81
Chairman

Edison W. Dick
Yale '59
Committee Member

Leslie G. Hilger, Jr. MD
Stanford '65
Committee Member

Jay L. Rothberg
American '69
Committee Member

Douglas P. Donaldson
UConn '72
Committee Member

John T. Doyle
Tufts '76
Committee Member

Michael J. Freiman
Maryland '78
Committee Member

James Donald
Western Ontario '82
Committee Member

Ronald J. Cass
Case Western '84
Committee Member

Barth H. Gillan
McGill '85
Committee Member

Andrew M. Nunez
Texas '95
Committee Member

Gregory E. McElroy
NYU '70
Campaign Coordinator

M. Lauck Walton
RPI '84
IHQ Staff Coordinator



Stan Gorski (Syracuse '86), Mike Sheinberg (Syracuse '86), and Greg McElroy (NYU '70) at 2018's Heritage Society Reception.

Save The Date

ZETA PSI
EDUCATIONAL
FOUNDATION
Annual Meeting

August 14-18, 2019
Renaissance
Baltimore Harborplace
202 E Pratt St., Baltimore, MD

CUMULATIVE GIVING CLUB FOOTNOTES

Zeta Psi Thanks Our
Valued Donors for
Supporting our Programs

Founder's Circle
\$100,000

Order of the Escutcheon
\$50,000

1847 Society
\$25,000

Order of the Five Pointed Star
\$10,000

Phi Alpha's Council
\$5,000

Golden Circle
\$2,500

Silver Circle
\$1,000

Comstock Associates
\$500

Red Motley Leadership Club
\$250

Century Club
\$100

Z4L indicates those brothers who
are Zeta4Life members.

Bolded names indicate members
of The Zeta Psi Heritage Society

Thank you to the more than 800
donors who participated in the
1847 Pledge Campaign.

Donations received
June 1, 2017 to May 31, 2018



2017-2018 Supporters of Zeta Psi by Chapter



Alpha (Columbia)

The Phi Alpha's Council

Jared Sunshine 2004

The Golden Circle

Michael Mayer 1991

Michael Pomeroy 2002

William Tietjen 1984

The Silver Circle

Andrew Werden 1988

Kenneth Suh 1989

Donors

David Blum 2001

Alpha Beta (Minnesota)

Founder's Circle

Alan Rice 1950

The 1847 Society

Carl Kuhrmeyer 1949

The Golden Circle

Donald Bonstrom 1951

Jeffrey Scott 1968

The Silver Circle

John LaLonde 1960

Peter Torvik Sr 1960

Wayne Toenjes 1972

The Comstock Associates

Richard Gapinski 1956

Roger Ruckert 1979

The Red Motley Leadership Club

Ronald Jacobson 1960

Donors

Yoav Rogovin 1997

Alpha Epsilon (Illinois)

The Order of the Escutcheon

Theodore Brickman Jr 1955

The Golden Circle

Richard Morse 1964

David Denis 1945

Ivar Nelson 1952

The Silver Circle

Brant Davis 2008

Bruce Brantingham 1956

Carl Palczewski 1975

Charles Lindrooth 1956

Hunt Blatz 1986

John Surufka 2013

Martin Weinberger 1988

Ronald Anderson 1974

Timothee Bouhour 2013 Z4L

The Comstock Associates

Benjamin Heck 2008 Z4L

Donald Edwards 1952

James Hastings 1997

Matt Caddell 2018

Robert Patha 1966

Timothy Schmidt 1989

The Red Motley Leadership Club

Anav Pant 2016 Z4L

Conor Desmond 2009 Z4L

The Century Club

Kory Sczurek 2016 Z4L

Donors

Adam Peterson

Alan Gan 2019

Alec Wasowicz 2018

Arturo Guerrero 2018

George Schaller V 2016

John Karamichos

Jon Chao 2016

Julius Shapiro

Paul Bennett 1960

Shane O'Brien

Alpha Mu (Dalhousie)

The Comstock Associates

Evan Hallward 2014 Z4L

TK McNair 2015 Z4L

Donors

Alex Abrams 2016

Alexander Voogjarv 2017

Charly LeMarquand

Jack Bestwick

James Coons 2018

Justin Michitsch 2017

Alpha Nu (Claremont)

The Order of the Escutcheon

The Golden Circle

Daniel Byun 1997

The Comstock Associates

Adam Wasserman 1994

The Century Club

James Gonzales 1995

Donors

Benjamin Hoyt 2000

Alpha Omega (Villanova)

The Silver Circle

Joseph Croasdale 1985

Alpha Pi (Virginia Tech)

The Golden Circle

Robert Kackley 1987

The Silver Circle

Brian Grozdanoff 1996

Robert Clements 1984

The Comstock Associates

Robert Rando 1988

The Century Club

Jeffrey vonSeldeneck 1994

Martin Roche 1986

Troy Heiner 1989

Donors

Brendan Thompson 2014

Brian Sullivan 1993

Tofique Sikder 2015

Alpha Psi (McGill)

The Golden Circle

Barth Gillan 1985 Z4L

Christopher Campbell 2001 Z4L

Simon Wignall 2000 Z4L

Stephen Poole 1984

The Silver Circle

Anthony Zitzmann 1994 Z4L

James Madon 1984 Z4L

Larry Crossan 1981 Z4L

The Comstock Associates

Charles Madon 2010 Z4L

David Fortin 2011 Z4L

John Hopkins-Hill 2015 Z4L

Michael Szpejda 2013 Z4L

The Red Motley Leadership Club

Christopher McGuire 2013

Jeffrey Mead 2012

Joseph Feldman 2014 Z4L

Lambert Lefebvre 2017 Z4L

Ohannes Torudag 2002

Sean Finnell 2015 Z4L

Wayne Burke 2010 Z4L

The Century Club

Carter Brown 2009

Matthew Tucci 2014 Z4L

Ramzi Cotran 2017 Z4L

Ryan Kates 2016 Z4L

Stefan Prokopetz 2012

Xavier Fortin 2017 Z4L

Donors

Alex Massi 2017 Z4L

Alexander Ness 2017

Alexandre Perron 2018 Z4L

Andrew Just 2014 Z4L

Christopher de Courcy-Ireland 1991

Corey Steinke 2018

Daniel Lamothe 2004

David Ness 2016

Dean Perlman 2019

Dominic Spothelfer 2018

Drew Allen 2016

Edward de Courcy-Ireland 2019

Edward Wooten 1993

Etienne Poulin-Leblanc 2020

Gabriel Katzen 2015

Jacob Washkurak 2016

Kyle Gardner 2016 Z4L

Kyle Jacobson 2008

Laurent Lefebvre 2019

Lucas Francioli 2018 Z4L

Luke Visconti 2021

Marco Peghini 2014

Mark Michaels 2019

Matthew Sherrett 2007

Max Adelson 2012

Maxime Aubin 2017

Michael Fishman 2017 Z4L

Neal Rayner 1993

Noah Gillard 2018 Z4L

O'Neil Agossa 2019

Paul Belanger 2004

Philippe Dion

Richard Minzberg 2015

Sebastian Grutter 2016

Seth Zucker 2019

Wyatt Hnatiw 2014

Alpha Theta (Waterloo)

The Silver Circle

Michael Ruth 2005 Z4L

The Comstock Associates

Christopher Black 2005

Jeff Cremasco 2003 Z4L

William Evans 2008 Z4L

Donors

Ronald Aric Guité 2003

Ryan Berckmans 2010

Beta (Virginia)

The Order of the Five-Pointed Star

George Holcomb III 1976

The Golden Circle

C. Jones 1972

S Young 1972

Stephen Busch 1977

W Morris 1973

The Silver Circle

Frank McLaughlin Jr 1959

Nicholas Jalowski 1977

William Dordelman 1962

Daniel Pariseau 2012

Beta Sigma (Georgia)

The Comstock Associates

Austin Carson 2009 Z4L

Beta Tau (Tulane)

The 1847 Society

Stephen Halperin 1984 Z4L

The Phi Alpha's Council

Donald Peters Jr 1981

The Golden Circle

Andrew Brain 2013 Z4L

Corey Dunbar Esq 2002 Z4L

Everett Marshall Jr 1990

Ozgur Karaosmanoglu 1984

William Woldenberg 2007 Z4L

The Silver Circle

Aaron Ronksley 2007 Z4L

David Nettle 1990

Drake Bathke 2008 Z4L

Jamie Eide 2014 Z4L

Jay Leblang 2004 Z4L

Joseph Gibaldi 1981

Mark Williams 2002

Ross Capdeville Sr 2000 Z4L

The Comstock Associates

Christopher Bond 2005 Z4L

Gene Krejci 2003

Kurt Koenigsberger 1994

William Stafford 2005 Z4L

The Red Motley Leadership Club

James Tipple 2003

David Litchfield 1980

James Cornblatt 2002 Z4L

Jason Murphy Esq 2002

Donors

Adam Frey 2006

Adam Griego 2014

Andrew Murray 2020

Andrew New 2009

Bill Steves 2006

Brian Coblitz 2002

Christopher Blum 2002

Cody Van Voorhis 2013

Cutter Uhlhorn 2014

Darion Stofira 2006

Michael Brunelle 2017
Sean Bristow 2016 Z4L
Theodore Stone Lyons 2015

Epsilon (Brown)

The Golden Circle
Conrad Herrmann 1982
Mark Cunningham 1984
The Silver Circle
Andrew Chlebus 1971
Christopher Strong 1971
James Goodwillie Jr 1970

Eta (Yale)

The Order of the Escutcheon
Edison Dick Esq 1959
The Order of the Five-Pointed Star
David Weild III 1952
The Phi Alpha's Council
Brian Moloney 1993
T Stick 1960
The Silver Circle
George Watson III 1953
Arthur Draper Jr 1965
Ben Grover 2003 Z4L
Gordon Gerson 1958
The Comstock Associates
Erich Cluxton 1965
The Red Motley Leadership Club
Paul Staelin 1993
Donors
Brian Whalen 1997

Gamma (Syracuse)

The Order of the Five-Pointed Star
Edward Guy III 1983
Robert Lugari 1985
The Phi Alpha's Council
George Tracy 1985
James Miller 1949
Lawrence Baum 1987
Vincent Cole 1978
The Golden Circle
Kevin Lastorino 1983
Alfred Miesemer 1983
Anthony Breslin Sr 1949
Kevin Fillip 1982
Martin Brezner 1981
Robert Heitsenrether 1985
Stanley Gorski Jr 1986
The Silver Circle
Robert Hickey 1983
Ira Berkowitz 1982
The Comstock Associates
James Doolittle 1966
Jonathan Perkins 1979
Kenneth Knabe 1961
Randall Schein 1980
The Red Motley Leadership Club
John Thorson 1966
Donors
William Sokol 1982

Gamma Epsilon (Georgetown)

The Silver Circle
Mike Kiritsy 2012 Z4L
The Comstock Associates
Conor Bennett 2012 Z4L
Joseph Gowen 2015 Z4L
The Century Club
Sven Beer 2015
Donors
Charles Mancini 2016
Eddie Dual 2015 Z4L
Jonathan Balloch 2011
Seth Menghi 2016

Gamma Psi (Guelph)

Donors
Ryan Shoot 2016

Iota (UC Berkeley)

The Order of the Five-Pointed Star
William Floyd Jr 1956
The Phi Alpha's Council
Frederick Duhring 1944
Peter Newell 1955
Raymond Pounds 1972
The Golden Circle
James Gallinatti 1952
Joseph Gorman Jr 1961
Minton Newell 1960
Ripley Hunter III 1980
The Silver Circle
Drew Roberts 1960
Terence Healey 1986
William Haines Jr 1959
The Comstock Associates
Andrew Dellenbach 1991

The Century Club
Robert Weikert 1982
Donors
Andrew Licht 1979
Matt Tunney 1989
Samuel Johnson 2018

Iota Alpha (Texas)

The 1847 Society
Andrew Nunez 1994
M David Hunter 1980
The Golden Circle
Clay Albers 2002 Z4L
Paul Blinn 1984
The Silver Circle
Alex Morelez 1997 Z4L
Dustin Durst 2002
Matthew Stoops 1997 Z4L
Richard Niels Jr 1982
Robert Edgmon 1988
Tommy Stell 2012 Z4L
The Comstock Associates
Hamilton White 2011 Z4L
The Red Motley Leadership Club
Gavin Whitlock 2011 Z4L
S Jay Maguire II 1992
The Century Club
Robert Mueller 1990
Donors
Lane Marques 2011
Michael Kline 1989
Samir Mullick 2003

Iota Delta (UC Davis)

The Golden Circle
Richard Hunter 1984

Kappa (Tufts)

The 1847 Society
John Doyle 1976
The Order of the Five-Pointed Star
Joshua Hart 1979
The Phi Alpha's Council
Jonathan Curtis 1969
Michael del Giudice 1982
The Golden Circle
Gary Older 1975
Norman Wright 1957
The Silver Circle
James Poulos 1959
Lee West 1975
Paul Murphy 1952
Philip Swain Jr 1981
Steven Sorrel 1985
The Comstock Associates
James Studdiford 1951
Robert Hook 1952
The Red Motley Leadership Club
Gary Fradkin 1971
The Century Club
Robert Stricker 1969
Donors
Richard Rudolph 1985
James Tetler 2011
Peter Federman 2010

Kappa Phi (Cooper Union)

The Phi Alpha's Council
Donald Rotunno 1991
The Golden Circle
Jeffrey Hersch 1987
John Barkaus 1988
The Silver Circle
Scott Lyne 1992 Z4L
The Comstock Associates
James Philbin 1988
Theodore Dezvane 1992
The Red Motley Leadership Club
Josiah Hobson 1993
Donors
Ho Chul Shin 2010
Jack Donnellan 2017

Lambda (Bowdoin)

The Silver Circle
Arya Amirshahi 1990
The Comstock Associates
Edward Woods 1943
Albert Marshall 1956
Kevin Foster 1992
The Red Motley Leadership Club
Christopher Jackman 1990
Hubert Shaw Jr 1965

Lambda Psi (Wisconsin)

Donors
Dale Adney, 2006

Mu (Stanford)

Founder's Circle
Leslie Hilger Jr 1965
The Phi Alpha's Council
Eric Wente 1973
The Golden Circle
Edward Culin 1950
John Wall Jr 1981
Richard Gould 1959
The Silver Circle
Warren Cutting 1950
Richard Raimondi 1974
Timothy Devine 1957
The Comstock Associates
Curt Brohard 1974

Mu Pi (Binghamton)

Donors
Alex Liu 2015
Jason Allalouf 2008

Mu Theta (Alberta)

The Silver Circle
Ryan Spotowski 2009 Z4L
Timothy DesRoches 2008 Z4L
The Comstock Associates
Richard Shuhany 1968
The Red Motley Leadership Club
James Upright 2008
Max Anderson 2015 Z4L
The Century Club
Aaron Zidichouski 2012
Donors
Chris McNally 2014
Forrest Zeiser 2007
John Tod 1957
Mark Wells 2009

Nu (Case Western)

The Order of the Escutcheon
Philip Osborn 1960
The 1847 Society
Bruce Eckstein 1960 Z4L
Ronald Miller 1969
The Order of the Five-Pointed Star
Ronald Cass 1984 Z4L
The Phi Alpha's Council
Burton Judson Jr 1961
The Golden Circle
Andrew Schroter 1972
Gary Kelley 1979
Jack Mowry 1954
Thomas Meder 1979
Thomas Van Denberg II 1971
The Silver Circle
Charles Radke 1955
Valentine Matula 1979
Charles Stephan 1961
Gregory Rogers 1980
Guy Danner 1988 Z4L
Lloyd Stettler 1962
Manuel Kanter 1994
Michael Krejsa 1987
Paul Stephan 1964
Robert Snyder 1985
Trevor Ilse 2007 Z4L
Warner Luoma 1964
The Comstock Associates
Benjamin Kupka 1973

Benjamin Meck 2009 Z4L
Christopher Preaman 2006 Z4L
Curt Howard 1987
Donald Wilson Jr 1989
Franklin Mayse 2007 Z4L
Jacob Sullivan 2014 Z4L
John Kilbane 2017 Z4L
Jonathan Pastor 2000 Z4L
Lawrence Wiley 1959
Matthew Mallet 1999
The Red Motley Leadership Club
Charles Huddleston II 2009 Z4L
James Wickert 1950
John Jones 1991
Michael Szugye Jr 2005
The Century Club
Evan Goldring 1996
Mario LaTragna 1997
Martin Drabik 1984
Donors
Ben Witoff 2013
Eric Nied 2011
Garrett Byrne 2013
Ian Crowley-Perry
Jacob Glenn 2002
Jay Winter Jr 1996
Kevin Wissner 2005
Michael Giammo 2010
Michael Yeager 1989
Peter Cooke 2012

Phillip Fannin 1983
Tim Wibowo 2013
Nu Delta (Marist)
The Silver Circle
Edward Summers 2004 Z4L
John Maiale 2005 Z4L
The Comstock Associates
Daniel Caracciolo 2002
Isaiah Miller 2014 Z4L
The Silver Circle
John Gray 2003 Z4L
Jonathan Avila 2015 Z4L
The Century Club
Tony Boyle 2012
Donors
Timos Pietris 2017

Nu Sigma (Seton Hall)

The Golden Circle
Edmund Luciano III 2005
Peter Kern 2005 Z4L
Tyler Boisvert 2010 Z4L
The Silver Circle
Jonathan Ernesto 2004
The Red Motley Leadership Club
Darion Smalls 2011 Z4L
Donors
Blake Willis 2015
Michael Terranova III 2014
Nick Scrivanich 2012
Ryan Binnix 2008
Timothy Sporcic 2010

Omega (Northwestern)

The Order of the Five-Pointed Star
Lee Stiles Jr 1948
Robert Rehak 1971
James Carey 1960 Z4L
The Phi Alpha's Council
William Sandberg 1970
The Golden Circle
Steven Michaels 1991
James Cloonan 1952
John Broan 1957
John Champlin 1967
Phillip Zee 1984
The Silver Circle
Joel Metter 1970
Richard Gerardi 1965
Richard Kann 1960
The Comstock Associates
David Beach 1961
The Red Motley Leadership Club
Wayne Butterfield 1951

Omega Alpha (Chicago)

Donors
Edwin Abundis 2014

Omicron (Nebraska Wesleyan)

The Order of the Escutcheon
Robert Busted 1960
The Golden Circle
Kraig Prange 1993 Z4L
The Silver Circle
Paul Davidson 1958
Brian Ridder 1990
Douglas Kosmicki 1996
Harry Garrett 1959
Jeffrey Hibbler 1996
Larry Ewer 1962
The Comstock Associates
Gary Tekolste 1982
Norval Eberspacher 1957
Donors
Matt Seems 2013
Ryan Klute 2017

Omicron Epsilon (Princeton)

The Order of the Five-Pointed Star
James Forese 1986
The Golden Circle
David Holland 1985
Edward Deutsch 1991
Donors
Ralph Manigat 1993

Phi (NYU)

The Order of the Escutcheon
Gregory McElroy 1970 Z4L
The 1847 Society
Gary Soya 1983
The Order of the Five-Pointed Star
Franklin White 1950
John Gebhardt 1969
Phillip Gass 2000
Robert Pirraglia 1969
Stuart Moy 1981
The Phi Alpha's Council

Richard Frodsham 1962
Walter Hedley Jr 1951
William Reiner 1969
The Golden Circle
Barry Wadler 1983
Charles Krug 1953
Janis Kopans 2011 Z4L
John Perides 1969
Walter Scott Jr 1953
The Silver Circle
Aaron Garcia 2008 Z4L
Alexander Sharif 2009 Z4L
Edgar Camacho 2011 Z4L
John Haldenwang 1951
LeRoy Kelley 1948
Richard Hines 1956
Robert Boyle III 2008 Z4L
The Comstock Associates
Anthony Abbate 2007 Z4L
Christopher Bush 2011 Z4L
Edgar Castillo 2009 Z4L
Mike Genett 2015
Patrick Cirella 2009
Travis Owen 2014 Z4L
William Klueber Jr 1957
The Red Motley Leadership Club
John Cintolo 2012 Z4L
Sergio Lira 2012 Z4L
The Century Club
Robin Belcher-Timme 2003
Donors
Daniel Point 2011
Derek Pahigiannis 2004
Peter Fitzpatrick 2014 Z4L
Ridhish Kankariya 2007
Thomas Bredillet 2010

Phi Epsilon (Maryland)

Founder's Circle
Stuart Bowers 1981 Z4L
Michael Freiman 1978 Z4L
The 1847 Society
Adam Fechter 1991
The Order of the Five-Pointed Star
Andrew Frisvold 2006
George D'Angelo 1978
John Failla 1978
The Phi Alpha's Council
Andrew O'Brien 2002 Z4L
Drew Lyons 1980
The Golden Circle
Andrew Bridge 1978 Z4L
Chad Tompkins 1988 Z4L
Christopher Hutter 1989
David Fletcher 1986
John Brady III 1985
The Silver Circle
Gavriel Swerling 2011 Z4L
Alan Dubin 1978 Z4L
David Morris 1982
Kenneth Gerhart 1978
Philip Aronson 1975 Z4L
Scott Weinberg 2009 Z4L
Steven Freiman 2011 Z4L
Thomas Parker 2009 Z4L
The Comstock Associates
Andrew Koines Jr 2011 Z4L
Dan Degginger 2008 Z4L
David Young 1982
Jason Nguyen 2009 Z4L
Michael Sotak 2009 Z4L
The Red Motley Leadership Club
Adam Freiman 2014 Z4L
Joseph Alessi 2011 Z4L
Louis Wolff 2014 Z4L
Lucas Jennings 2015 Z4L
Michael Frymark 1987
Nicholas Giuditta III 1985
The Century Club
Mark Liberman 1981
Brad Jensen 2008
Garrett Datz 1995
John Sullivan 1984
Lee Janofsky 2010
Matthew Liebowitz 2010
Scott Schill 2011 Z4L
Donors
Alain Parcan 2010
Alexander Meiseles 2009
Bertinus Johnson 2015
David Blauner 2009
Dominic LoPiccolo 2018
Eric Roth 2001
Fred Frick Jr 1976
Henry Du Pont 2013
Keith Latham 1986
Logan Stair 2010
Matt Loughlin 2012
Thomas Simpson 1982

CUMULATIVE GIVING CLUB FOOTNOTES

Zeta Psi Thanks Our
Valued Donors for
Supporting our Programs

Founder's Circle

\$100,000

Order of the Escutcheon

\$50,000

1847 Society

\$25,000

Order of the Five Pointed Star

\$10,000

Phi Alpha's Council

\$5,000

Golden Circle

\$2,500

Silver Circle

\$1,000

Comstock Associates

\$500

Red Motley Leadership Club

\$250

Century Club

\$100

Z4L indicates those brothers who
are Zeta4Life members.

Bolded names indicate members
of The Zeta Psi Heritage Society

Thank you to the more than 800
donors who participated in the
1847 Pledge Campaign.

Donations received
June 1, 2017 to May 31, 2018

Phi Lambda (Washington)

The Order of the Escutcheon
Les Mann III 1973 Z4L

The 1847 Society
Patrick Carney 1976

The Order of the Five-Pointed Star
Alva CR Roberts 1970

Richard Elliott 1958
The Golden Circle

Bruce Boyd 1969
Donald Leonard 1960

Glen Ulmer 1972
Harrison Smith 1971 Z4L

Jason Conley 1998 Z4L
Joseph Mullins Jr 1960

Mark Anderson 1974
Michael Schonenberg 1981

Thomas Carskadden 1957
The Silver Circle

Dudley Pancho 1951
Roger Fricke 1980

Sims McGrath III 2010 Z4L
The Comstock Associates

James Ochsner 1977
The Red Motley Leadership Club

Jerry Wang 2011
The Century Club

Bryan Haakenson 1999
Frank Erickson 1970

Donors

Darren Littell 2006
David Matthews 1982

David Russell 1993
James Doocy II 2010

Jonathon Neilson 2007
Todd Benjamin 1984

Travis Orloff 2005
Tyler Pichette 2018

Pi (RPI)

Founder's Circle

James Ljunglin 1957
The Order of the Escutcheon

Allen Hobbs 1991
Edward Etess 1959

The 1847 Society
Robert Leonard 1961

The Order of the Five-Pointed Star
Arthur Gajarsa 1962

James Meade 1984
Jay Webb 1961

Lauck Walton 1984 Z4L
Robert Sendall 1959

The Phi Alpha's Council
Harvey Poppel Jr 1958

William Bourassa 1971
The Golden Circle

Edward Kasold Jr 1970
Frederick Tibbitts III 1991

Paul Pfeiderer 1998
The Silver Circle

Eric Warner 1989 Z4L
Patrick Welch 1986

David Puleo 1987
Frank Barone 1955

Frank Harrington 1991
James Monteleone Jr 1989

James Peta Jr 1964
John Spohn 1981 Z4L

John Stolzenthaler 1965
Joseph Briggs 1997

Peter Hills 1991
Ronald Liberty 1964

Seth Goodman 1985
Steven Popper 1964

Wesley Hains 1962
The Comstock Associates

Joseph Bell 1989
Peter Peta 1967

Stanford Seto 1961
The Red Motley Leadership Club

Elton Kaufmann 1964
John Dale 1990

Joshua McWilliam 2002 Z4L
Michael Mao 1991

Russell Herman 2006
Suchin Ratanasirivilai 1991

The Century Club
Brian Sparks 1992

Claudio Caballero 1987
Frank Magliato 1973

Gregory Kirby 1988
John DAddieco 1982

John Diego Jr 1995
Kurt Hollasch 1993

Mark Morse 1989
Robert Land 1993

Sandeep Jandial Jr 1995
Scott Thomson 1991

Sean McKenna 1993

Theodore Rubsamen III 1989
Donors

Daniel Snyder 2018
Eugene Lauritano Jr 1983

Gregory Grimes 1999
Jeffrey Tumpowsky 1988

Jeremy Colon 2010
John Leatherman 1988

Joseph Novak 2012
Kenneth Semcken Jr 1997

Klaus Ullmann 1997
Kyle Hollasch 1997

Michael Benjamin Jr 1988
Nolin Borrero Jr 2007

Patrick Hughes 2003
Paul Zapustas 2003

Ryan Vasko 2012
Samuel Notaro 2010

Scott Frayler 2000
Sohail Syed 2012

Theodore Papoulas 1987
Theodore van Kessel III 1977

Thomas Moberg 1971
Thomas Pickett Jr 1990

Timothy Plante 2010
William Kempf 1988

Pi Epsilon (Manitoba)

The Comstock Associates
Douglas DuVal 1975 Z4L

Donors
Garth Rowsell 1990

Pi Kappa (Bloomsburg State)

The Phi Alpha's Council
Michael Pillagalli 1971

The Golden Circle
Barry Swartz 1972

The Silver Circle
James Warnagiris 1970

Jonathan Marks 1988
Robert Emert II 1983 Z4L

Timothy Wagner 1974
The Comstock Associates

David Bilger 1976
Joseph Micko Jr 1974

Donors
John Schock 2004

Stephen Polzer 1978
Todd McMichael 1985

William Condosta 1991

Pi Sigma (Penn State)

Founder's Circle
Gary Mootz 1963 Z4L

The 1847 Society
Richard Breeswine 1987

The Phi Alpha's Council
Frank Miller 1958

Michael Rash 1991
The Golden Circle

John Shrum 1961 Z4L
William Andres 1969

The Silver Circle
David Miles 1967

John Mellon 1976
Michael Christiansen 1978

Brian Lomasky 1994
Daniel Florencio 2011 Z4L

Edmund Roberts 1963
Edward Datemasch 1959

Eric Quedenfeld 1990
Geffrey Vitale 1997 Z4L

James Hampson 2012 Z4L
Nick Grassetti 2012 Z4L

Paul Feigel 1974
The Comstock Associates

Chris Donohue 2012
Larry Thompson 1969

Paul Campbell 1971
The Century Club

Brian Eaton 2006
Charles Anderson 1970

Gary Jones 1969
Timothy Weinstein 1993

Donors
Brian Stafford 2000

Charles Gowdy 2011
Edward Kosmowski Esq 1989

Joe Kranick III 2012
Larry Young 1972

Ryan Vinson 2013

Pi Tau (WPI)

The Order of the Five-Pointed Star
Evan Pressman 1984 Z4L

The Golden Circle
Christopher Grace 1995 Z4L

Christopher Jamieson 1997 Z4L

James Pavlat 1997
Justin Ripley 1999 Z4L

Lucas Young 1993
Michael Bush 1987

The Silver Circle
Anthony Richardson 2009 Z4L

Frank Arsenault 2004 Z4L
Geoffrey McElroy 2001 Z4L

Geoffrey Zub 1996
Jason Kipp 1998 Z4L

Joshua Brandt 2005 Z4L
Kevin Norcott 2001 Z4L

Matthew Houde 2005 Z4L
Michael Castonguay 1978

Nicholas Moriarty 2003 Z4L
Thomas Nogueira 2005 Z4L

William Shaw III Esq 2001 Z4L
The Comstock Associates

Christopher Gallagher 2003 Z4L
Eric Kenney 2003 Z4L

John Zuena 1988
Kyle Vander Poel 2005 Z4L

Licinio Alves 1985
Marc McCaige 2005

Michael Burdick 1989
Michael Fyrberg 1997

Ryan Abraham 1998
William Evangelakos 2016

William Howe 2011 Z4L
The Red Motley Leadership Club

Bryan Hayes 2000
Evan Doyle 2013

Gary Loeb 1977
The Century Club

Burke Ryder 2002
Peter Langfield 1984

Quinn Perry 2014 Z4L
Sean Donnelly 2011

Donors
Alex Haring 2015

Alex Reeves 2013
Andres Pedraza Rayo 2015

Andrew Galanis 2015
Benjamin Zogby 2018

Brandon Rubadou 2012
Brian Wilkinson

Carter Lewis
Cesar Rodriguez 2016

Chris Schramm 2016
Christian Curl

Christopher Hammers 2007
Cola DiLibero III 2016

Craig Blanchette 2009
Dale Spencer Jr 2013

Danill Effraimidis 2014
David Weiner 2009

Dennis Tappin 2001
Derrick Anderson 1987

Eli Wolfgang 2015
Eric Sheridan 2010

Ethan Di Renzo 2021
Hayden Collins 2015

Jaimes Spring 2013
Jake Smith

James Phelan 2007
Joe Pasquarelli 2013

Joe Pizzuto 2016
Joseph Stapleton 2019

Justin Fahie 2016
Karl Baker 1998

Matt Giambone 2015
Michael Gifford Jr 2015

Michael Ilic
Michael Medeiros 2005

Michael Oliveri 1998
Nate Fournier 2013

Nicholas Christie 2016
Oliver Lizotte II 2016

Peter Tuma 2013
Peter Yee 1983

Raymond Stinson II 1984
Robert Brackett 1983

Rolando Herrera 1986
Ryan Adams 2010

Scott Rementer 2021
Stephen Tressel 2011

Thomas Cormier Jr 2016
Thomas McCarthy

Tyler Tilbe 2015
Wesley Simpson 2011

William Klewien 1996
Zachery Rahl 2016

Psi (Cornell)

Founder's Circle
Kenneth Burkhardt Jr 1967

The 1847 Society
Thomas Roerden 1983 Z4L

The Order of the Five-Pointed Star
Maurice Duocinq 2003

Robert Chaves 1963
Scott Pedersen 1990 Z4L

William Lee Jr 1970
The Phi Alpha's Council

Harry Copperthwaite 1969
The Golden Circle

Edward Beebe 1970
Herbert Ley Jr 1954

James Lennon 1954
John Doucette 1988

John Lynch 1989
Robert Jewett 1961

William Michalerya 1976
The Silver Circle

Dennis Novak 1970
Alan Danser 1973

Alex Pruce 2013 Z4L
Benjamin Bissantz 2011

Gerard Lilly 1962
Howard Fries 1974 Z4L

James Prendergast 1993
Peter Gramer 2012 Z4L

Tristan Hemphill 2012 Z4L
William Brothers Jr 1967

William Riley Jr 1962
The Comstock Associates

Alan van den Arend 2010
James Mueller 1961

Jeremy Reiss 2003
Matthew Lowenbraun 2002

Michael Haruk 1971
Scott Everling 1990

Simon Krieger 1976
Victor Carfi 1980

The Red Motley Leadership Club
John Sawchuk 1971

Edgar Storm 1953
Justin Charles 2014 Z4L

Thor Helgason 1983
The Century Club

Charles Lamacchia 1990
Christian Day 1967

George DeLorenzo III 1991
Glenn Pacchiana 1989

Gregory Connor 1990
Gregory Poulos 1989

Jesse Devinney 2005
Joe Mileo 2017

John Baker 1978
Joseph Lennon 1993

Laurence Boles 1987
Mark Miola 1989

Matthew Escovar 2006
Neil Fonseca 2008

Patrick Murray 1989
Tony Ross 1989

Wayne Hickey II 1991
Donors

Adam Wrobel 2014
Alek Korzeniewski 2016

Alex Koppara 2016
Alexander Bowerman 2009

Anatoly Rozenal 2012
Andrew Shaughnessy 2010

Ben Hennessy 2013
Chad Albright 2019

Changhao Yu 2009
Charles Baker 1986

Chase Mira 2007
Christopher Cassano 2014

Christopher Downey 1990
Christopher Yeung 2007

Crorey Letcher 2012
Daniel Gustafson 2011

Daniel Palmadesso 2006
David Fisher 2003

David Kheel 2005
David Miller 1987

Dean Hall 1988
Dennis Shen 2019

Devin Gallagher 1996
Edmund Hoi 2014

Edward Mistretta 1970
Edward Murphy 1985

Eli Doris 2015
Eric Pearson 2010

Ethan Peck 2010
Gregory Frisoli 1992

Harrison Zipper 2010
Ivan Qiu 2014

Kevin Simonds 1993
Kylar Rood
Mark Boyland 1985
Mark Merritt 1983
Mark Schmitt 1985
Matthew Burrows 2006

Michael Collet
Michael Cross 2006
Michael Grisanti 2014
Michael Xu 2011
Morris Hosley III 1990
Patrick Sullivan 1987
Paul Miller 1987
Peter Doucette 1992
Peter Galbo 2013
Peter Urian 2015
Phil Andriole 2014
Rafik Tawadrous 2009
Robert Scanlin 1986
Roger Wolfe 1990
Rohit Khullar 2014
Roman Lesko 2010
Ryan Stewart 2002
Samuel Lundin 2007
Samuel Shiffman 1990
Stas Dorokhov 2012
Sydney Thai 2011
Thomas Lee 1991
William Navas 1988
Xavier San Miguel 2006
Andrew Rust 2013

Psi Epsilon (Dartmouth)

The Golden Circle
David Springer 1979
Ray Keate 1976
Bruce Voelker 1987
James Maguire 1983
The Silver Circle
Benjamin Dean 1994
Michael Salzhauer 1984
The Comstock Associates
Stanley Stern Z4L
Thomas Oblak 1988
The Century Club
Jeffrey Owens 1992
Benjamin Guidi 2004
Donors
Bradford McKeown 2001
Edward Feist 2018
Eric Hill 1985

Rho (Middlebury)

The Golden Circle
Daniel Bailey III 1981
The Silver Circle
Neil Savage 1963
Jonathan Seamans 1983

Rho Alpha (MIT)

The Order of the Escutcheon
Robert O'Donnell 1985 Z4L
The 1847 Society
Daniel Wambold 1992
The Order of the Five-Pointed Star

James Madsen 1981

The Phi Alpha's Council
Eric Burger 1984
C De Vegvar 1985
The Golden Circle
Roy Cantu 1993
The Silver Circle
John Phillips 1985
Akil Middleton 2008 Z4L
Allen Russell 1982
Charlie Barr 2013 Z4L
Chris Rullan 2013 Z4L
Daniel O'Donovan 2015
Gregory Grove 1992
Gregory Stewart 1986
James Markiewicz 1985
Ronald Westhauser 1982
The Comstock Associates
David Newell 2006 Z4L
Billy Kelleher 2015 Z4L
Joshua Kramer 1996
The Red Motley Leadership Club
Christopher Sklarin 1988
Jared Bibler 1996
R Winston 1994
Thomas Popik 1982
The Century Club
Christian Alonzo 2015
Daniel Felten 1984
Duane Horton 1981
Howard Madnick 1987
Matthew Britz 1996
Rory Pfeiffer 2002

Donors

Aaron VanDevender 2001
Alejandro Dos Reis 2012
Alexander Markovits 2016
Andrew Greenhut 2006
Anthony Occidentale 2017
Benjamin Chrobot 2015
Bennett Wilson 2012
Charlie Bachmeier 2018
Chip Whittemore II 2012
Christopher Hunter 2018
Christopher McKinney 2017
Douglas Creager 2001
Erik Pearson 2015
Jesse Triplett 2013
John Gordon 2018
Justin Kent 2000
Laurent Charpentier 2010
Meng Mao 2006
Michael Heiman 2005
Obasi Onuoha 2017
Phil Cherner 2017
Robert Tran 2018
Tim Jenks 2013

Rho Epsilon (Harvard)

The Red Motley Leadership Club
Andrew Arends 1992
The Century Club
Abraham Meltzer 1988

Sigma (Penn)

The Silver Circle
Benjamin Allen 1952
George Gephart Jr 1979
Richard Pearson 1950
Sean Gallagher 1994
The Comstock Associates
David Sims 1976
McBee Butcher Jr 1989
The Century Club
Richard Caldwell 1996
Donors
Alexandre Mustier
Elliott Taylor 2018
Justin Adams 2009
Keith Bradner 2018
Maxwell Abram

Sigma Epsilon

(British Columbia)
The Century Club
Robert Fuller 1985

Sigma Phi (Illinois - Chicago)

The Phi Alpha's Council
Ronald Petri 1975
Ronald Petri 1975
The Golden Circle
Peter Caboor 1982
Walter Walejeski Jr 1975
The Silver Circle
Steven Murphy 1970
The Comstock Associates
Barry Gilbert 1969
Kenneth Piwowar 1971

Sigma Zeta (UC Los Angeles)

The 1847 Society
Don Nelson 1948
John Ellis 1981
The Phi Alpha's Council
Lawrence Tannas Jr 1959
William Schubert 1965
The Golden Circle
Michael Denison 1969
Robert Cronyn 1990
The Silver Circle
Anthony Napolitano 2005 Z4L
Brandon Jang 2012
Dylan Thomas 2004
Edward Miller 1952
The Comstock Associates
Hector Gutierrez-Medina 1978
Jon English 2006
Donors
Boris Gutman 2006
Brett Jensen 2004
Jeremy Freelove 2003
Mavrick Goodrich 2008
Peter Haber 2009
Raymond Eastwood 1964
Scott Timpe Esq 2007
Sean Berquist 2008

Tau (Lafayette)

Founder's Circle
Dillard Kirby 1981
William Buck 1950

The Order of the Five-Pointed Star

Fritz Gebhard 1971
The Phi Alpha's Council
Robert Evans III 1978
Jefferson Kirby 1984
Philip Schneider Jr 1954
The Golden Circle
Robert Bailey Jr 1976
Joseph Drucker 1977
Roger Dinella 1984
Stephen Pryor 1971
William Magee Jr 1985 Z4L
The Silver Circle
William Jantzen Jr 1975
Gerald Escala 1957
Arthur Bell III 1987
Brian Wachelka 1993
Bruce Hartlein 1979
E Green III 1954
Michael Zirinsky 1995
Nils Berglund 1973
Philip Duvall 1981
Randall McHugh 1985
Richard Meer 1963
Robert Beavins 1958
The Comstock Associates
Richard Broders 1975
Richard Rathemacher 1954
Robert Thurber 1985
Donors
Anthony Conrad III 1972
Colin Feehan 2003
Gregory Silverman 2006
Marc Teitelbaum 2015
Richard Marrano 2015

Tau Delta (Lehigh)

Founder's Circle
David Busacca Esq 1973 Z4L
The Golden Circle
Donald Mayer-Brown 1977
Donald Vansyckel 1973
Mark Goehring 1976
Thomas Smith 1978
The Silver Circle
Arthur Cader 1962
The Comstock Associates
George Kuczynski 1974
The Red Motley Leadership Club
Caesar Gorski Jr 1979
Stephen Politziner 1997

Tau Gamma (Purdue)

The Order of the Escutcheon
Daniel King 2000
The Order of the Five-Pointed Star
John Long 1983
The Phi Alpha's Council
Duane Jaeger 1999
The Golden Circle
John Simson 1976
Nathan Renie 1999
The Silver Circle
Gawin Pukchareon 2013 Z4L
The Comstock Associates
Anthony Jennings 1993
The Century Club
Daniel Luby 2014
Matthew Simpson 1989
Paul-Michael Butler 1997
Donors
Luke Skinner 2012

Tau Theta (Ontario Tech)

The Silver Circle
Anthony Aprile 2011 Z4L
Donors
Christian Nissen 2017
Neil Mawdsley 2012

Theta (Connecticut)

Founder's Circle
Douglas Donaldson 1972 Z4L
The Order of the Escutcheon
Peter Slomianj 1976
The 1847 Society
John Stelmach 1975
Steven Rogers 1973 Z4L
The Order of the Five-Pointed Star
Robert Kravacs Jr 1977 Z4L
William Ruggles 1974
The Golden Circle
Gerald Guilbeault 1982
James Conklin 1970
The Silver Circle
George Thomson 1963
John Downey 1972
Keith Nichols 1967
Michael Joyce 1973 Z4L

Sheldon Katz 1977
William Dripchak Jr 1970
The Comstock Associates
Jeffrey Sager 1972
Elbert Smith 1965
Harvey Beinstein 1964
Michael Frechette 1992 Z4L
Ronald Niederwerfer 1975
Scott Chadwick 1984
Thomas Stevens 1969
The Red Motley Leadership Club
Russell Bowen 1964
The Century Club
Edward Donofrio 1983
George Ohanesian 1971
Hugh Schweitzer 1987
Donors
Al Smith 1965
Brian Kolm 1996
Gerald Buckley 1968
John Greges 1995
John Scata 1990
Kyle Fortin 2013
Robert Kelley Jr 1975

Theta Eta (Brook)

The Comstock Associates
Christopher Arnold 2011 Z4L
The Red Motley Leadership Club
Steve Adkins 2014 Z4L
The Century Club
Steven Voulgaris 2016

Theta Omicron (Trinity)

Donors
Andrew Nagle 2013
Brian Cronin 2016 Z4L
Cian Mulville 2014
Sean O'Keeffe 2016 Z4L
Tim Blythman 2016 Z4L

Theta Phi (Western)

The Order of the Escutcheon
James Donald 1982 Z4L
The Golden Circle
Tom Trimble 1983 Z4L
The Comstock Associates
Alex Wijnbergen 2014 Z4L
The Red Motley Leadership Club
Daniel Weryha 2013 Z4L
The Century Club
Jonathan Wood 2011 Z4L
Donors
Ronald Mott 1986

Theta Psi (Queen's)

The Silver Circle
Alexander Martino 2011 Z4L
The Comstock Associates
Jeffrey Soehn 2011 Z4L
The Red Motley Leadership Club
Ilan Bloom 2009 Z4L
Donors
Vlad Ianceanu

Theta Xi (Toronto)

The Order of the Five-Pointed Star
Tony Hodgson 1983 Z4L
The Phi Alpha's Council
J. Corey Nicholson 1979 Z4L
Peter Wijnbergen 1986
Robert Mather 1969
Simoneon Brigden 1982 Z4L
The Golden Circle
Cameron Wasdell 1983 Z4L
Dave Stiff 1983 Z4L
William McNair 1977 Z4L
The Silver Circle
David Walker Jr 1988 Z4L
Gregory Cusimano 1979 Z4L
Jeffrey Ball 1979 Z4L
Roderick Macdonald 1983 Z4L
Thomas Cowan 1978 Z4L
William McKnight 1980
Donors
Bradley Macdonald 1996
Chris Reid 2009
Paul Myles 1978
Travis Coulter 2012
William Haw 1979

Upsilon (North Carolina)

The 1847 Society
Earl Johnson Jr 1954
The Golden Circle
W Hargrove III 1969
James Long 1962
The Silver Circle
James Barber 1967

James Black III 1968
Joel Williams 1990
John Wiggins III 1980
Richard Macon 1986
Turner Bunn III 1963
The Comstock Associates
Hugh Hussey III 1972
Donors
Samuel Thompson Jr 1999

Upsilon Mu (Massachusetts)

The Phi Alpha's Council
John Hendry 1977
The Silver Circle
Thomas Cahill 1978
Thomas Chew Jr 1989
The Century Club
Scott Sherman 1980
Michael Coughlan 1979
Robert Bosselman 1987
Donors
Benjamin Daskal 2007
Craig Pomroy 1996
Jonathan Agresta 2005

Xi (Michigan)

The Order of the Escutcheon
Estate of Ralph Rumsey 1965

The Order of the Five-Pointed Star

Irwin Deister Jr 1951
The Phi Alpha's Council
Denton Hanford 1959
Donald Canham 1970
John Schippel 1956
William Handorf 1966
The Silver Circle
David Lohrmann 1970
Jack Westman 1949
David Frayne 1955
Donald Cebulski 1963
John Lightfoot 1959
Michael Gillman 1961
Richard Hamilton 1952
Terry Blaney 1962
The Comstock Associates
George Todoroff Jr 1978
The Red Motley Leadership Club
Lawrence Michalak 1980

Donors
Alex Pietroski 2016
Brian Samimi
Dan Sicular 2016
Elijah Segraves
Jason Hollingsworth 2009
Joseph Carpenter
Justin Rogers 2018
Kenneth Brown 1966
Kevin Ziegler 2016
Kip Schimmoller 2018
Marshall Jones 2013
Matthew Miller 2016
Michael Berland 2009
Michael Munoz 2013
Nick Warminski 2017
Patrick Bowles 2007
Paul Christ 2018
Phil Davlik 1991
Robert Trombley 2007
Zac Boyd 2010

Zeta (Williams))

The Order of the Five-Pointed Star
William Moore 1958
The Comstock Associates
John McElroy III 1952
The Red Motley Leadership Club
Frank Ketcham 1934 Z4L

Friends

Order of the Escutcheon
MacLane Key Esq 1996 Z4L
The Silver Circle
Rebecca Napolitano 2014 Z4L
Red Motley Leadership Club
Edward Kirkin
The Century Club
Jo Adams

If your name has been omitted or you would like to make a donation, please contact Barth Gillan, gillan@zetapsi.org.

Non-Profit Org
U.S. Postage
Paid
W. Caldwell, NJ
Permit #55

**What you
leave behind
is not what
is engraved
in stone
monuments,
but what is
woven into
the lives of
others.**

– Pericles



The Heritage Society is Zeta Psi's planned giving society. Established in 1987 as part of Zeta Psi's 150th anniversary celebration, the Heritage Society now has over 400 members – people who are committed to the future of Zeta Psi

There are many ways to make a planned gift to Zeta Psi (both in the United States and in Canada). If you have already made plans to support Zeta Psi in your will, or if you would like more information on how to make a planned gift, please contact Barth Gillan (gillan@zetapsi.org or (845) 735-1847 x317).

Save The Date

Heritage Society Reception

August 17, 2019

Renaissance Baltimore Harborplace
202 E Pratt St., Baltimore, MD

**International
Headquarters**

15 South Henry St., Pearl River, NY 10965
Office: 845-735-1847 | zetapsi.org

ZΨ