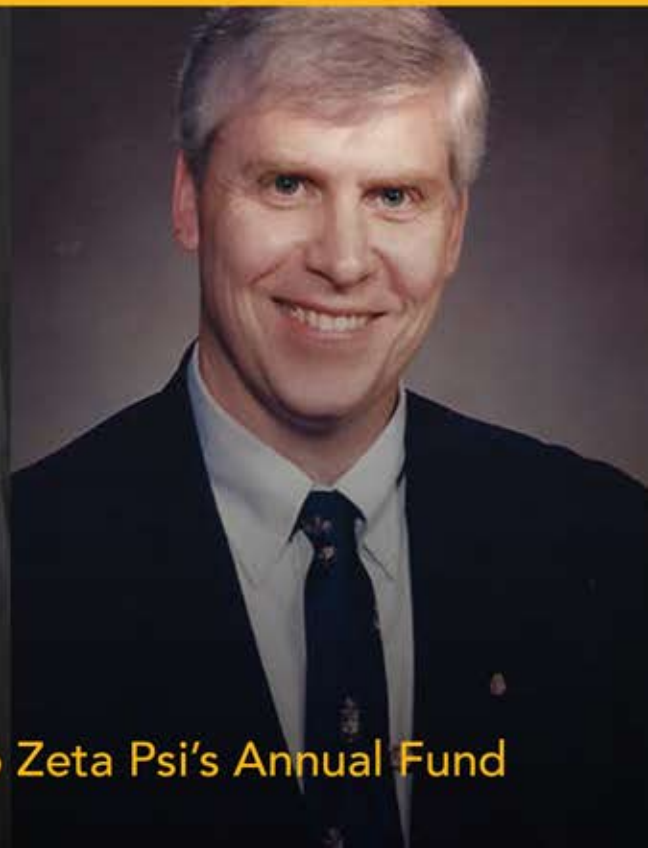




# ZETA PSI

## EDUCATIONAL FOUNDATION

### 2018 ANNUAL REPORT



**Greg McElroy**

Celebrating Three Decades of Service to Zeta Psi's Annual Fund

## Headquarters Staff

### Executive Director

M. Lauck Walton  
exec.dir@zetapsi.org

### Associate Executive Director

Tyler Boisvert  
boisvert@zetapsi.org

### Director of Communications

Max Anderson  
anderson@zetapsi.org

### Director of Education and Conferences

Joseph Alessi  
alessi@zetapsi.org

### Director of Information

John Surufka  
surufka@zetapsi.org

### Senior Regional Education Consultant

Bill Weisenhorn  
weisenhorn@zetapsi.org

### Regional Education Consultant

Dominic LoPiccolo  
lopiccolo@zetapsi.org

### Fundraising Consultant

Barth Gillan  
gillan@zetapsi.org

### Accounting

Tony Hodgson  
accounts@zetapsi.org



Greg McElroy's character as a Zete is encapsulated by his many friendships and close relationships accrued throughout his more than fifty years with Zeta Psi. Here Greg and his wife Bobbi enjoy the company of such close friends at Zeta Psi's annual NYC Founders Day Banquet.

## Table of Contents

- 01** Fraternity and Foundation Staff
- 02** Meet the New President
- 03** Scholarship in Review
- 05** 1847 Pledge Campaign
- 07** Zeta Psi Leadership Training Institute
- 08** An Interview With Greg McElroy
- 11** Financial Statements
- 13** Capital Campaign Wrap-Up
- 15** Cumulative Giving Club

## Contributors

**Max Anderson**  
Editor in Chief

**Ira Berkowitz and  
Monarch Communications**  
Design and Publication

**Randy Schein**  
Copy Editor

**David Busacca**  
Contributor

**Johnny Surufka**  
Contributor

**Barth Gillan**  
Contributor

**Greg McElroy**  
Contributor

**Lauck Walton**  
Contributor

**Joe Alessi**  
Contributor

**Tyler Boisvert**  
Contributor

**Bobbi McElroy**  
Contributor

**Kevin Johnstone**  
Contributor

**Stephen Halperin**  
Contributor

**Hesham Omran**  
Photography

**Stone Lyons**  
Photography

# Meet the New President

By David Busacca (Lehigh '73)



History ignored is history repeated.

Every group wants to promote its newest, best, up to date, groundbreaking practices to assure its members that the group “gets it” and remains relevant and “forward looking”. And this is important for Zeta Psi too.

But a look back can often be an enlightening way to re-focus.

At the time Greek societies were being founded, the country was relatively new; higher education was almost exclusively for white, propertied, East Coast males who had to travel some distance to attend college. It truly was an elite group, but it almost never provided housing. As such, a 17-year-old moving away from home for the first time had to find accommodations within days of arriving at school.

Into this very singular milieu, some men saw a need to assist with these concerns that they originally faced and an opportunity to associate with men of similar interest and sensibilities. So began an experiment within higher education of a “secular” form of “social education” allowing young men destined to be the country’s professionals, industrialists, and teachers to form a group expressing their own high ideals and goals.

Obviously, a lot changed over more than 170 years. Now these fraternities look to its prior members to support those same goals, albeit modernized, with their time and treasure to allow those following them to experience the same. Zeta Psi Educational Foundation was the embodiment of that process (and the US Treasury’s tax code). The Foundation’s singular objective is to provide funding to realize those ideals of so long ago. This is done through direct scholarships for members, as well as programs that more formally expose members to experiences of leadership, supervision, responsibility, mutual support and tradition that our early founders knew were critical skills for “purposeful gentlemen” to succeed in society.

As all institutions progress, the Foundation needed more individualized giving support. Serendipitously, for 30+ years that was provided by Greg McElroy. Anyone who has been involved with Zeta Psi and particularly the Foundation in the last 40 years knows Greg and his tireless commitment to our funding efforts. Now our own Barth Gillan, past Phi Alpha and Montreal Zeta, is transitioning into that role. Welcome them when they call; tell them what your priorities are; listen to the proposed and existing programs Zeta Psi offers, and, hopefully, donate. Your donations are your input to this ongoing commitment effort to develop your brothers into the best men in our society.

*Congratulations to David and the newly elected officers and trustees of the Educational Foundation. In August, they began a new mandate where the officers of the Educational Foundation are completely different from the officers of the Fraternity.*

## Board of Trustees

### David Busacca

Lehigh '73  
President

### Tom Roerden

Cornell '83  
Vice President

### Will Woldenberg

Tulane '07  
Secretary

### Richard Breeswine

Penn State '87  
Treasurer

### Andrew Brain

Tulane '13  
Trustee

### Jon Ernesto

Seton Hall '04  
Trustee

### Phillip Gass

NYU '00  
Trustee

### Stan Gorski

Syracuse '86  
Trustee

### Les Hilger

Stanford '65  
Trustee

### Edmund Luciano III

Seton Hall '05  
Trustee

### John Spohn

RPI '81  
Trustee

### Edward Summers

Marist '04  
Trustee

### Dylan Thomas

UCLA '04  
Trustee

### Les Mann

Washington '73  
Past President

### Dan Homoncik

UOIT '10  
Canadian Foundation Representative

# 2017-2018 Scholarship in Review

Written by Johnny Surufka (Illinois '13)

The following chapters have a specific fund dedicated to their chapter:

**Alpha (Columbia)**  
Robert T. Goldberg Leadership Fund

**Alpha Epsilon (Illinois)**  
Zahn Olmstead Endowment Fund

**Alpha Pi (Virginia Tech)**  
Jud Browning Scholarship Fund

**Delta (Rutgers)**  
Donald M. Moore Delta Fund,  
Delta Endowment Fund

**Eta (Yale)**  
Eta Fund

**Kappa Phi (Cooper Union)**  
Kappa Phi Fund

**Mu (Stanford)**  
Mu Endowment Fund

**Nu (Case Western)**  
Nu Scholarship Fund

**Omicron Epsilon (Princeton)**  
Omicron Epsilon Memorial Fund

**Phi (NYU)**  
Albert Valentine Fund, Harold Finley  
Fund, Virgil & Moody Gates Fun, Leila  
& William Mackay Memorial Fund

**Pi (RPI)**  
Pi Endowment Fund, Ira Richer Fund

**Psi (Cornell)**  
Burkhardt Family Scholarship Fund,  
Psi General Fund, Tom & Donna  
Jewett Scholarship Fund

**Psi Epsilon (Dartmouth)**  
Frederick Cole Endowment Fund

**Rho (Middlebury)**  
Baldwin/Landon Memorial Fund

**Rho Alpha (MIT)**  
Owen M. Williams Fund

**Sigma Gamma (NC State)**  
Sigma Gamma Fund

**Sigma Phi (UIC)**  
T. Ryan Sigma Phi Fund

**Sigma Zeta (UCLA)**  
Sigma Zeta Scholarship Fund

**Tau Delta (Lehigh)**  
Tau Delta Elders Fund

**Tau Gamma (Purdue)**  
Tau Gamma Scholastic Achievement Fund

**Zeta (Williams)**  
Lt. F. Kendall Mitchell (USNR)  
Scholarship Fund

Over the past 74 years, the Zeta Psi Educational Foundation has awarded scholarships to deserving students in the United States. The Foundation is funded in part by our Fraternity's generous donors.

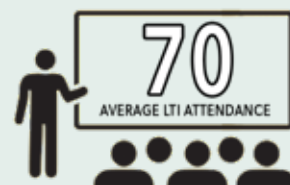
This past academic year, the Zeta Psi Educational Foundation awarded \$40,000 in general scholarships in addition to \$10,000 in chapter-specific funds to over 100 applicants. These awards, ranging from \$250 to \$1,000, are given based on academic excellence, leadership in Zeta Psi, involvement in other campus activities, and financial need. With the ever-rising costs associated with higher education, their impact cannot be understated. To quote one recent recipient: "I'm incredibly grateful to receive this scholarship award and cannot thank Zeta Psi enough for helping to make my college experience more affordable. It means a lot to me."

Applications open early in both the fall and spring academic semesters and can be accessed at [www.zetapsi.org/scholarships](http://www.zetapsi.org/scholarships). Zeta Psi's Scholarship Committee, led by Clay Albers (Iota Alpha '02), reviews all submitted applications and determines the most worthy. Elders interested in volunteering for the committee should contact Zeta Psi's Executive Director.

## Your Support Makes This Possible



**\$152,877**  
TOTAL SPENT ON HOSTING  
REGIONAL LTIs



**\$56,250**  
TOTAL SCHOLARSHIP  
DOLLARS AWARDED

**108** INDIVIDUAL  
SCHOLARSHIPS  
GRANTED

# 2017-2018 Scholarship in Review

## Zeta Psi Educational Foundation

General Scholarships Awarded

Fall 2017/Spring 2018

First Name	Last Name	Chapter	First Name	Last Name	Chapter
Patrik	Anderson	Princeton University	John	Marshall	Princeton University
William	Beichner	American University	Alec	McFarlin	American University
Harrison	Blarr	American University	Logan	Mendelson	Worcester Polytechnic Institute
Julian	Bustillo	Tulane University	Gabriel	Mennesson	New York University
Collin	Campbell	University of Maryland	Joseph	Molinari	Binghamton University
Kyle	Cassara	Georgetown University	Anthony	Mower	Worcester Polytechnic Institute
Juan Pablo	Castella	University of Chicago	Mateen	Nemati	The Cooper Union
Andrew	Chen	University of Minnesota	Jonathan	Nghiem	University of Minnesota
Christian	de Abreu	University of Pennsylvania	Jack	Nigro	Worcester Polytechnic Institute
Dominick	De Lucia	American University	Shane	O'Brien	University of Illinois
Bryan	Deneen	Georgetown University	Peter	O'Leary	Dartmouth College
Michael	Dib	University of Maryland	Glory	Okwori	Other / Not Listed (Non-Brother)
Tianhang	Dong	Dartmouth College	Brian	Parker	University of Washington
Sebuabe	Dzobo	Rensselaer Polytechnic Institute	Eric	Plaut	Dartmouth College
Alexander	Epprecht	New York University	Alec	Reginato	University of Minnesota
Ratul	Esrar	University of Chicago	Dennis	Reilly	Dartmouth College
Neilesh	Frings	Pennsylvania State University	Norman	Reyes	University of Illinois
Seth	Gainsburg	Cornell University	Bryce	Rogers	American University
Parkash	Garcha	Marist College	Giovanni	Sanchez	The Cooper Union
Daniel	Greenberg	Binghamton University	Christopher	Santos	Binghamton University
Joseph	Grekoski	Binghamton University	Aidan	Smolar	The Cooper Union
Ethan	Halom	University of Illinois	Ryan	Spalding	New York University
Dalton	Hegeholz	Nebraska Wesleyan University	Matthew	Sperle	University of Minnesota
Bryan	Hingerton	University of Maryland	Nicholas	Stout	University of Michigan
William	Huang	New York University	Klevis	Tefa	New York University
Zachary	Hubert	Pennsylvania State University	Nathaniel	Teitler	Nebraska Wesleyan University
Brian	Huff	American University	Peter	Tran	Dartmouth College
Nikhil	Iyengar	The Cooper Union	Alex	Tsolmon	University of Washington
Shivam	Khanna	University of Maryland	Timothy	van Dover	Cornell University
Shreyaan	Khetarpal	New York University	Matthew	Van Wagenen	Seton Hall University
Shane	King	Marist College	Miles	Vinikow	University of California, Santa Barbara
Thomas	Koch	The Cooper Union	Alex	Vraspir	Nebraska Wesleyan University
J Isaac	Krieger	University of Minnesota	Katarina	Walther	American University
Anthony	Kuykendall	American University	Andrew	Ward	Georgetown University
Alexander	Kyriakides	New York University	Jordan	Wells	American University
Myung Chang	Lee	Dartmouth College	Vincent	Wenzel	University of Illinois
Joshua	Lee	Dartmouth College	Erik	Widjaja	University of Minnesota
Austin	Leikvoll	University of Minnesota	Ry	Wiese	University of Minnesota
Josiah	Lucas	University of Minnesota	Michael	Wilkinson	Worcester Polytechnic Institute
Michael	Lucatorto	American University	Grant	Williams	American University
Cowboy	Lynk	Massachusetts Institute of Technology	Andrew	Williamson	Virginia Tech
Michael	Mangia	New York University	Tyler	Wilson	Worcester Polytechnic Institute
Jake	Mania	American University	Graham	Wobig	Virginia Tech
Tyler	Marsh	Worcester Polytechnic Institute			

# 1847 Pledge Campaign

By Barth Gillan (McGill '85)



Geoff McElroy (WPI '01), Alex Pruce (Cornell '13), Barth Gillan (McGill '85), and Chris Romano (American '20) pose with the championship belts on behalf of their chapters.

In 1847, three young men founded our fraternity to allow young men at college the opportunity to learn and grow through brotherhood. In 2017, the 170th anniversary of Zeta Psi was celebrated with the launching of the 1847 Pledge Campaign – a campaign that reached out to all brothers. This campaign was intended to ensure that young men at college could continue to learn and grow.

The concept was simple: donate \$18.47 in honor of Zeta Psi. The proceeds raised would be used to support the Leadership Training Institute (LTI) at the annual convention – an experience that leaves every participant better prepared to face the up-and-coming academic year.

The campaign was launched on June 1st, 2017 and ran for 18 days, ending at 18H47 on June 18th. During this campaign, 579 donors contributed \$22,591.79 to support education for members of Zeta Psi. Although many people contributed \$18.47, some generous brothers moved the decimal place and increased their support. Other brothers opted to recognize the Fraternity's anniversary by donating \$170 (\$1 for every year). The Chapter that won the 1847 Pledge Challenge -- with 73 brothers participating -- was the Beta Tau Chapter at Tulane University.

In 2018, the 1847 Pledge campaign was repeated, but feedback from the participants in 2017 suggested that we move the timing away from the summer. So, the 2018 challenge launched on March 27th,

# 1847 Pledge Campaign (Cont.)



Barth Gillan accepting the "Top Canadian Chapter" belt on behalf of the McGill Chapter.



The Cornell Chapter accepting the championship belt for the 1847 Pledge.

which is the anniversary of the founding of the Theta Xi Chapter at the University of Toronto – an act which made Zeta Psi the first international fraternity. Regardless of nationality, this Zeta Psi first is a point of pride for every member of our brotherhood. It has continued to inspire Zeta Psi as we have expanded overseas to new chapters. During the 2018 weeklong campaign, 496 brothers showed their pride in Zeta Psi by participating and contributing \$23,130.88 towards membership education for Zetes.

This year, recognizing that membership is not always equal between chapters, categories were created to 'level the playing field' between chapters. The Alpha Psi Chapter (McGill) threw down the gauntlet for all Canadian chapters. A Young Chapter category was created in which we recognized those Chapters with a history of less than ten years. To counter the Canadian challenge, a winner for the United States was also identified. However, please note that all of these categories were runners-up to the overall champion.

The winners for the 1847 Pledge Campaign (2018) were recognized at the convention in Ithaca in August.

Thank you to all of our participants - they're recognized on pages 15-18.



The Delta Chi Chapter recognized as the "Young Chapter" champion.



The Pi Tau Chapter accepting the "Top American Chapter" belt.

# Zeta Psi Leadership Training Institute: 2017-2018

By Joe Alessi (Maryland '11)

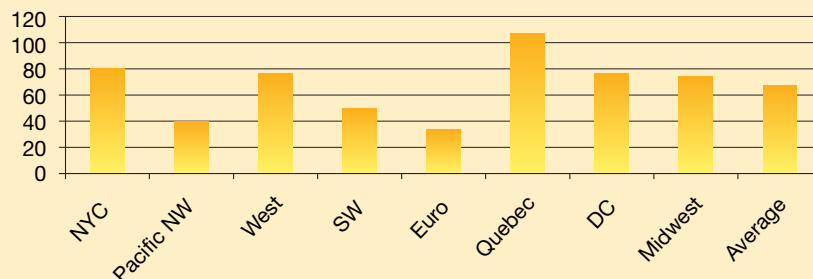


During the 2017-18 academic year, the Zeta Psi Educational Foundation furthered its efforts to provide the highest quality membership development training to its undergraduates. Between September 2017 and April 2018, Zeta Psi's Regional LTI program reached 549 undergraduates through eight events that spanned three countries and two continents. Total attendance has ticked up from 2016-17 and average attendance continues to improve for the sixth consecutive year.

2017-18 is also the first full year that the evolved Regional LTI model was adopted. As we traded classrooms for conference centers and small towns for major metropolitan areas, the Regional LTI program was able to tap into our formidable Elder Zeta network. By leveraging elder proximity, the program devoted one-third of its programming to active-elder collaborative sessions, which paired groups of undergraduates with elder advisors to complete highly interactive activities in the risk management and professional development spaces.

In 2016-17, it was noted that the proposed changes in the LTI format would represent the future of the Regional LTI program: well-attended and geographically-varied professional development events that are delivered within the financial means of the organization as part of a holistic membership educational experience. During the 2017-18 academic year, that future has begun to be realized.

**Attendees Per LTI**





# An Interview With Greg McElroy

## Celebrating 30 Years of Service to the Annual Fund

Interview transcribed by Tyler Boisvert (Seton Hall '10)

**Greg McElroy has meant more to Zeta Psi than anyone else over the past 50 years. I've been fortunate that when I joined the board in 2009 as the Undergraduate Board Representative and then as I continued as a staff member in 2010, that I've been able to consider Greg a close friend, mentor and brother. So that everyone in the brotherhood can understand what this man has meant to Zeta Psi, I decided to ask him a variety of questions that led him to tell us all about his service, dedication and involvement throughout the years.**

### Questions

**1. After receiving your undergraduate degree at NYU, why did you want to work for Zeta Psi?**

My more than 25-year tenure as staff member of the Zeta Psi Headquarters — which was called the Zeta Psi Central Office when I began my association with the International organization — began in my fifth year as an NYU student in its uptown campus, which was then in the Bronx. At that time, the leaders of the staff needed someone to work in the back office of the Central Office — primarily to run its addressograph system, which was the way that Zeta Psi's Elder database was managed in the pre-technology era. We communicated through direct mail and The Circle magazine distribution to our alumni members. As I was about to graduate in the spring of 1971, I was offered the job as the only Chapter Consultant for the Central Office. I visited all of the 40-plus chapters throughout North America during the 1971-72 school year. I did not actively seek to work for Zeta Psi, but rather was a beneficiary of being the right Zete at the right time.

**2. How long have you been in charge of the Annual Fund program for the Zeta Psi Educational Foundation? When did you transition to being a contractor for the Annual Fund?**

I began my Annual Fund management in the 1980s. When I left my full-time position as Zeta Psi's Executive Director in 1996, I continued to manage Zeta Psi's Annual Fund program as part of my client relationship with the firm I had just joined. When I started my own fundraising consulting firm in 2000, I entered a formal consulting relationship with the Zeta Psi Educational Foundation to continue managing the Annual Fund, which continued until this year when that management function was given to Barth Gillan, who became Zeta Psi's major staff development person.

**3. What has been your favorite part of working for Zeta Psi?**

There are so many enduring memories of my quarter-century tenure with Zeta Psi and there is no one favorite aspect of that part of my professional life. I would guess the most endearing part of my 48 years of association with the International Fraternity is the satisfaction of having made close (and in many cases, lifetime) friendships with hundreds of Zetes from chapters throughout the USA, Canada and the British Isles. In my early years, my strongest memories are centered on rebuilding Zeta Psi's chapter roll from a low of 32 in the early '70s to the mid-40s by the early 1980s. In the 1980s and early 1990s, some of my strongest memories revolve around the significant growth of Zeta Psi's endowment fund. I spent more of my time involved in fundraising activities. On a more personal and emotional basis, I would rate the initiation of my only son Geoffrey, which I attended, as a highlight of my last few years as Zeta Psi Executive Director.



Another key to Greg's career is the support that he has received from his three children. During the 1993 convention, Greg was seated at a baseball game with daughter Stephanie, Bobbi, and son Geoffrey (WPI '01). Greg's oldest daughter Christy was not at that convention, but joins her sister and brother as parents of Greg and Bobbi's eight grandchildren.

**4. McElroy and Associates consist of you and your amazing wife Bobbi. What has Bobbi meant to Zeta Psi and to you over the years?**

I met my wife Bobbi in the spring of 1972 at a small party I had arranged for some Zetes in New York City when Phi Alpha Jim McLaughlin was visiting, and we have been a couple ever since then. We were married in 1974. There is simply no way I could have ever continued to work for Zeta Psi as its chief operating officer for 25 years without her support. But, since she had a highly successful career as a retail executive (which involved frequent travel all over the world) I was an important partner to her as I often managed some primary care for our three young children while she moved up the corporate retail

# An Interview With Greg McElroy (Cont.)

ladder—primarily with Toys”R” Us and Babies”R”Us—until she retired from that job in 2005. She then joined my firm, McElroy & Associates, as my partner and chief office administrator. We have worked together as a team for over ten years. Bobbi has been almost as important to Zeta Psi as I may have been as she has been an integral part of Zeta Psi’s IHQ operations for many years, especially in regards to the Annual Fund and other capital development programs – which I had managed for over three decades. We are truly blessed as a couple as we are not only happily married, but best friends as well.

## 5. **If you could share any one piece of wisdom to donors over the last 35+ years, what would you say to them?**

Never forget what Zeta Psi meant to you as an undergraduate. Hopefully it had a positive influence on your life and professional career. What is true for so many of us is that some of the best friendships of our lives were formed and matured during our fraternity experience. This is one of the many reasons why thousands of Zetes choose to contribute to both their local chapters and the International Fraternity. It is only through the generosity of so many Elders over the years that Zeta Psi has the financial resources to support its operations and the many programs that make us as strong as we are today.

## Capital Campaigns

### 6. **This last Capital Campaign declared victory with 3.5 million dollars raised -- mostly for membership education. So first off, congratulations. How important do you think membership education is to the future and how did you decide upon membership education as a goal?**

First of all, thank you for your congratulatory comment regarding the successful outcome of the Campaign for Zeta Psi: Building Strong and Honorable Leaders. This campaign had its roots in the expansion of Zeta Psi’s membership development program – which began in 1980. It then grew significantly with Maurice Ducoing’s oversight when he became that committee’s chairman and championed the program’s huge growth throughout the past two decades. So, when then-Phi Alpha Andy Nunez approached me in 2013 and asked me to engage in the initial stages of a capital campaign (primarily to provide a permanent endowment for this educational program) I found a high degree of interest and financial support within Zeta Psi. Most of the \$3 million-plus contributed to this latest campaign was directed to educational programming, so I truly believe this will help support the most transformative and educational Zeta Psi programming for decades to come.

### 7. **Challenging question - when do you think the next Capital Campaign should be started?**

It’s hard to predict. There have been three major gift programs within the International organization in my time: the Campaign for Endowment, which was conducted in the early 1980s. This Campaign employed a combination of current gifts that were paid over five years or less. It was dominated by deferred gifts. In the mid-1980s, I was the chief fundraising professional and raised \$500,000 to purchase and endow the International Headquarters property in the NYC suburb of Pearl River, New York. During the ramp-up to Zeta Psi’s 150th convention – which was held in New York in 1997 -- a program to widely promote deferred giving was launched and is known as the Heritage Society. It had 150 charter members. And most recently I had a hand in completing the Campaign for Zeta Psi, which was mentioned earlier. If I was to predict a logical timeframe for the next capital campaign, it might be around the time of Zeta Psi’s 175th anniversary in 2022.



Greg receiving his Distinguished Service Award at the New York City Convention in 2011.

## Heritage Society

### 8. **The Heritage Society was founded in 1997 and now consists of over 400 members. How did you come up with the idea to celebrate the 150th Anniversary of Zeta Psi?**

As mentioned previously, the Heritage Society concept arose out of the positive response to the successful outcome of deferred giving contributions — mostly bequests from Elders, but also some insurance gifts — prior to and following the 1980s Campaign for Endowment. The major attribution for the Heritage Society idea belongs to an early IHQ staff member who worked for me, Jack Doyle, Tufts ’76. Jack served on Zeta Psi’s Board in the mid-1990s and has become a major figure in the direct mail fundraising profession in his field.

**9. What are you hoping the Heritage Society will accomplish for the Educational Foundation?**

In the years since the first 1980s major gifts campaign, the Heritage Society has already added at least \$5 million to the endowment of the Zeta Psi Educational Foundation with more than 50 bequests. It will add just as much as — if not more than — \$10 million in the next ten to twenty years. These added funds will allow Zeta Psi to provide funding for more programs and services to over 50 chapters and our 30,000-plus active and elder Zetes.

**Legacy**

**10. You've graced Zeta Psi with being Phi Alpha of the Fraternity and Foundation President from '06-'08. How impressed were you with those on the board?**

I was privileged to serve as Phi Alpha CXXXI in 2006-07 and 2007-08. It was a wonderful two years of my life and was during a period of relative calm in our long history. I was blessed with many dedicated Board members who exemplified the Three T's; each Board member contributed copious amounts of Time, Talent and Treasure throughout my tenure as Phi Alpha and in all the years that I have served Zeta Psi. The most noteworthy event in my two years as Phi Alpha was the privilege of presenting a Zeta Psi charter to the charter members of our Iota Omicron Chapter at Oxford University in the spring of 2008. This was a sort of bold experiment for Zeta Psi -- to see if we could bring the concept and traditions of the North American Greek system across the Atlantic to a group in the UK. Therefore, it was a special event for me this past April when I returned to London to celebrate the Oxford chapter's 10th anniversary.

**11. What do you want people to remember about your time working, running and volunteering for the Zeta Psi Educational Foundation?**

I realize that my service to Zeta Psi is probably historical in nature, as my service as Zeta Psi's chief operating officer was the longest in our history. My attendance at 48 straight Zeta Psi annual conventions is also a record. But more-so, I hope I will be remembered as the one who, following one of the most disruptive periods for the Greek system, grew Zeta Psi's chapter roll in the 1970s. I'd also like to be remembered as the one who helped substantially improve the financial health of both the Zeta Psi Educational Foundation and Zeta Psi Fraternity. I tried to conduct both my professional and volunteer careers with Zeta Psi with honor and brotherly love.

**12. You've had a long and distinguished career to be proud of - is there any one thing that comes to mind that you would liked to have done differently?**

This is a hard question to answer, as I believe I avoided major controversies and hardships since 1971, which is when I became Zeta Psi's Executive Director. I always regretted whenever any chapter under my watch was forced to become dormant, which happened for a variety of reasons. In retrospect, some of those closings were unavoidable, but they still left a negative mark on me whenever those closings took place.

**13. Any last thoughts?**

I guess my last thoughts revolve around two central themes: the influence that a happy marriage and family life can have on one's success or failure in his/her professional life, and the stark realization that success in the world of non-profit organizations is dependent on the dedication, generosity and scope of service of the organization's members throughout each and every generation. I have had more than my share of an abundance of fortune in these areas and I wish to extend my brotherly love to the hundreds of Zetes — both living and deceased — who have helped shape my years of service to Zeta Psi and to so many of whom will remain close to me until I die.



As is the case with any Zete, the bonds of brotherhood are formed during one's days as an active. Shown here with Greg at the 1986 Boston Convention are Greg's NYU Brothers Bob Pirraglia ('69), Bill Reiner ('69), and Dave O'Brien ('70).

Greg's service to Zeta Psi was too much to capture on these three pages. To read the full interview, visit [zetapsi.org/mcelroy](http://zetapsi.org/mcelroy)

This interview is being released in conjunction with the Legacy Project video series highlighting Greg McElroy. Visit Zeta Psi's YouTube channel to view the full video: [youtube.com/ZetaPsiFraternity](http://youtube.com/ZetaPsiFraternity)

# Financial Statements

---

Zeta Psi Educational Foundation continues to use its resources wisely to help meet its mission through effective programs and direct financial support. The Foundation carries a long tradition of outstanding financial stewardship which continues to the present.

## **Compared to Our Peers**

The Foundation benchmarks itself against other “Fraternity” Educational Foundations using publicly reported data on the IRS Form 990.

**Net Assets** -- Over the past 15 years, Zeta Psi’s net assets have grown 193%. The most recent results show that our net assets are near the middle of the results for the 54 Foundations analyzed. Our net assets are within 1% of the mean and about one-third higher than the reported median. As a fraternity with fewer chapters we are pleased with our long-term performance and growth in net assets.

**Programming** -- Zeta Psi has continued to grow the total dollars and percentage of revenues used to support our programs. We intend to continue to increase dollars used to support of our programs in the coming years as our endowment grows and we identify new donors to add to our ability to deliver insightful and needed programs to enrich the undergraduate experience.

**Fundraising Expenses** -- Zeta Psi has consistently delivered efficiency in Fundraising, choosing to put more into our programs, but we are being outpaced by our peers who are not afraid to invest in order to raise money. The Board intends to invest a few more dollars on the margins to entice new donors and to improve our outreach to our existing donors, all of which will have a positive impact on our undergraduates due to more resources for programs.

## **Financial Management**

The Foundation Board constantly balances between immediate program needs and long-term stability. Historically, the Foundation spent no more than 5% of the available endowment funds on programs. However, starting in 2016, the Foundation began to taper the draw down with a plan to reach a 4% draw per annum by 2020. The Board believes that the more conservative draw makes sense in the current low interest and inflation environment.

The Board has noted the growth of designated and chapter-specific funds over time. The Board now requires a minimum of \$25,000 to initiate a designated fund. All funds should then disburse at least 4% of their values each year. Proceeds that are not in use in the previous year are then released to the general fund in the next fiscal year. The Board believes that this strikes an appropriate balance between current needs and building for the future as it encourages chapters to grant scholarships, support the LTI program, or to request housing grants each year so that the intended recipients benefit from the generous gifts by Elder donors now and into the future.

The Board has continued to select AllianceBernstein as our investment advisor. The investment oversight committee is pleased with the services and the costs associated with our portfolio. The Board’s current portfolio asset allocation is 70% equity and 30% debt. The Board has selected Berard and Associates as its independent auditor and is pleased to report an unqualified return. Foundation members that attended the annual meeting received a copy of the audited statements. Any member that would like a copy may request it from the International Headquarters.

# Zeta Psi Educational Foundation

## Condensed Audit Results

for the years ended May 31, 2018 and 2017

<b>Assets</b>	<b>2018</b>	<b>2017</b>
Total Current Assets	\$64,888	\$125,726
Investments at Market Value	\$6,522,488	\$6,156,194
Total Property and Equipment	\$113,387	\$124,488
<b>Other Assets</b>		
Due from Zeta Psi Fraternity, Inc.	\$169,422	\$32,950
Pledges Receivable	\$366,802	\$734,956
Loan Receivable	\$17,797	\$21,245
Painting	\$5,000	\$5,000
Cash Surrender Value - Life Insurance	\$298,712	\$293,187
Total Other Assets	\$857,733	\$1,087,338
Total Assets	\$7,558,496	\$7,493,746
<b>Liabilities and Net Assets</b>	<b>2018</b>	<b>2017</b>
Total Current Liabilities	\$14,093	\$28,664
Unrestricted Net Assets	\$4,572,363	\$4,673,285
Temporarily Restricted Net Assets	\$2,004,038	\$1,840,427
Permanently Restricted Net Assets	\$968,002	\$951,370
Total Net Assets	\$7,544,403	\$7,465,082
Total Liabilities and Net Assets	\$7,558,496	\$7,493,746
<b>Revenue</b>	<b>2018</b>	<b>2017</b>
Net Investment Revenue (Loss)	\$491,238	\$579,712
<b>Contributions</b>		
Annual Fund	\$364,253	\$414,784
Capital Campaign Gifts	\$158,819	\$28,251
Net Capital Campaign activity	\$(174,054)	\$(47,011)
Total Contributions	\$349,018	\$396,024
Other Revenues	\$17,941	\$18,192
Total Revenue	\$858,197	\$993,928
<b>Expenses</b>	<b>2018</b>	<b>2017</b>
Program Services	\$537,429	\$482,855
Management and General	\$151,952	\$148,828
Fundraising	\$89,494	\$90,456
Total Expenses	\$778,876	\$771,789
Change in Net Assets	\$79,321	\$271,793
Net Assets Beginning of Fiscal Year	\$7,565,081	\$7,193,292
Net Assets End of Fiscal Year	\$7,544,402	\$7,485,081

# Capital Campaign Wrap-Up

By Barth Gillan (McGill '85)

In June 2014, with a goal of \$3MN, The Building Strong and Honorable Leaders Campaign was launched to raise money to support the Membership Education Program offered by the Zeta Psi Educational Foundation. The campaign set out to ensure that Zeta Psi has the resources to continue to improve the membership education provided to young men through the Leadership Training Institute (LTI).

During the Convention in Ithaca, NY in August 2018, it was announced that the campaign had surpassed its original goal, even surpassing the modified goal of \$3.5MN, and the campaign was declared a success. Thank you to the many donors who supported this campaign, most of whom maintained their Annual Fund support during the campaign to ensure that the regular activities of the Educational Foundation were not compromised during the campaign.

This campaign would not have succeeded without the leadership of Stuart Bowers and Greg McElroy, as well as the support of the campaign volunteers. Most important, however, is the ongoing belief of the donors that mission of the Zeta Psi Educational Foundation is vitally important for young men.

## Founding Leaders Society - \$500,000 and Above

Theodore W. Brickman, Jr.	Illinois	1955
James J. Ljunglin CXXI	RPI	1957
Alan R. Rice	Minnesota	1950

## Diamond Leaders Society - \$250,000 - \$499,999

Anonymous

## Platinum Leaders Society - \$100,000 - \$249,999

D. Stuart Bowers	Maryland	1981
William C. Buck	Lafayette	1950
Kenneth Burkhardt	Cornell	1967
Douglas P. Donaldson CXXIII	Connecticut	1972
Michael J. Freiman CXXVII	Maryland	1978

## Gold Leaders Society - \$50,000 - \$99,999

James Donald	Western	1982
Philip Gass	NYU	2000
Leslie G. Hilger, Jr. MD	Stanford	1965
Allen Hobbs	RPI	1991
Gary L. Mootz	Penn State	1963

## Silver Leaders Society - \$20,000 - \$49,999

Douglas S. Boothe	Princeton	1986
David W. Busacca CXXXII	Lehigh	1973
Ronald Cass	Case Western	1984
George D'Angelo	Maryland	1978
John T. Doyle	Tufts	1976
Bruce Eckstein	Case Western	1960
John Ellis	UCLA	1981
Edward Etes	RPI	1959
Adam J. Fechter	Maryland	1991
Tony Hodgson	Toronto	1983
Les Mann III CXXVI	Washington	1973

Gregory E. McElroy CXXXI	NYU	1970
Ronald E. Miller PE	Case Western	1969
Andrew M. Nunez CXXXIV	Texas	1994
Robert J. O'Donnell CSP	MIT	1985
Thomas P. M. Roerden	Cornell	1983
Daniel Wambold	MIT	1992

## Bronze Society - \$10,000 - \$19,999

Dwight Anderson	Princeton	1989
Edison W. Dick CXIV	Yale	1959
James Forese	Princeton	1986
Barth H. Gillan CXXXV	McGill	1985
Stephen M. Halperin	Tulane	1984
M. David Hunter CXXX	Texas	1980
Andrew L. Jones	UCLA	2003
Stuart T. Moy	NYU	1981
Scott Pedersen	Cornell	1990
Robert Pirraglia	NYU	1969
Alva "C.R." Roberts	Washington	1970
Steven H. Rogers	Connecticut	1973
Jay L. Rothberg CXIX	American	1969
M. Lauck Walton CXXXIII	RPI	1984

## Circle Society - \$5,000 - \$9,999

Anthony Abbate	NYU	2007
Anthony Barkan	Princeton	1988
Tyler Boisvert	Seton Hall	2010
John D. Clark	Princeton	1987
Brant Davis	Illinois	2008
Timm DesRoches	Alberta	2008
Thomas A. Dippel	Princeton	1993
Maurice Ducoing	Cornell	2003
Jon English	UCLA	2006
John S. Failla	Maryland	1978
Stephen Golden	Princeton	1990

# Capital Campaign Wrap-Up

Brandon Jang	UCLA	2008
R. Thomas Jewett	Cornell	1961
Robert Kackley	Virginia Tech	1987
MacLane C. Key Esq.		
Robert Kravacs	Connecticut	1977
Bob Lugari	Syracuse	1985
Jay Maguire	Texas	1992
Brian Moloney	Yale	1993
Kraig Prange	Nebraska Wesleyan	1993
Evan Pressman	WPI	1984
Anthony Richardson	WPI	2009
William Ruggles	Connecticut	1974
Senth Sivakumaran	Toronto	2015
Lawrence Tannas	UCLA	1959
Adam Wasserman	Claremont	1994

## TKPhi Society - \$2,000 - \$4,999

Benjamin Bissantz	Cornell	2011
Kevin Canavan	Lafayette	1976

Edward A. Deusch	Princeton	1991
Thomas P. Herbell PhD	Case Western	1956
Edmund (Lou) Luciano III	Seton Hall	2005
Brian McCready	Calgary	1999
Geoffrey McElroy	WPI	2001
J. Corey Nicholson	Toronto	1979
Lorne Sobczyk	Calgary	2008
John Spohn	RPI	1981
Jared Sunshine	Columbia	2004
Dylan Thomas	UCLA	2004
Will Woldenberg	Tulane	2007

## Zete Society - \$1,000 - \$1,999

Dean Cummings	Minnesota	1992
Jonathan Ernesto	Seton Hall	2004
George "Whit" Holcomb	Virginia	1976
Adam Wisniewski	Claremont	1994

## Zeta Psi Capital Campaign Committee

**James J. Ljunglin**  
RPI '57  
Honorary Chairman

**D. Stuart Bowers**  
Maryland '81  
Chairman

**Edison W. Dick**  
Yale '59  
Committee Member

**Leslie G. Hilger, Jr. MD**  
Stanford '65  
Committee Member

**Jay L. Rothberg**  
American '69  
Committee Member

**Douglas P. Donaldson**  
UConn '72  
Committee Member

**John T. Doyle**  
Tufts '76  
Committee Member

**Michael J. Freiman**  
Maryland '78  
Committee Member

**James Donald**  
Western Ontario '82  
Committee Member

**Ronald J. Cass**  
Case Western '84  
Committee Member

**Barth H. Gillan**  
McGill '85  
Committee Member

**Andrew M. Nunez**  
Texas '95  
Committee Member

**Gregory E. McElroy**  
NYU '70  
Campaign Coordinator

**M. Lauck Walton**  
RPI '84  
IHQ Staff Coordinator



Stan Gorski (Syracuse '86), Mike Sheinberg (Syracuse '86), and Greg McElroy (NYU '70) at 2018's Heritage Society Reception.

## Save The Date

**ZETA PSI**  
**EDUCATIONAL**  
**FOUNDATION**  
Annual Meeting

August 14-18, 2019  
Renaissance  
Baltimore Harborplace  
202 E Pratt St., Baltimore, MD

# CUMULATIVE GIVING CLUB FOOTNOTES

Zeta Psi Thanks Our  
Valued Donors for  
Supporting our Programs

**Founder's Circle**  
\$100,000

**Order of the Escutcheon**  
\$50,000

**1847 Society**  
\$25,000

**Order of the Five Pointed Star**  
\$10,000

**Phi Alpha's Council**  
\$5,000

**Golden Circle**  
\$2,500

**Silver Circle**  
\$1,000

**Comstock Associates**  
\$500

**Red Motley Leadership Club**  
\$250

**Century Club**  
\$100

Z4L indicates those brothers who  
are Zeta4Life members.

Bolded names indicate members  
of The Zeta Psi Heritage Society

Thank you to the more than 800  
donors who participated in the  
1847 Pledge Campaign.

Donations received  
June 1, 2017 to May 31, 2018



## 2017-2018 Supporters of Zeta Psi by Chapter



### **Alpha (Columbia)**

*The Phi Alpha's Council*

#### **Jared Sunshine 2004**

*The Golden Circle*

Michael Mayer 1991

Michael Pomeroy 2002

William Tietjen 1984

*The Silver Circle*

Andrew Werden 1988

Kenneth Suh 1989

*Donors*

David Blum 2001

### **Alpha Beta (Minnesota)**

*Founder's Circle*

#### **Alan Rice 1950**

*The 1847 Society*

#### **Carl Kuhrmeyer 1949**

*The Golden Circle*

Donald Bonstrom 1951

Jeffrey Scott 1968

*The Silver Circle*

John LaLonde 1960

Peter Torvik Sr 1960

Wayne Toenjes 1972

*The Comstock Associates*

Richard Gapinski 1956

Roger Ruckert 1979

*The Red Motley Leadership Club*

Ronald Jacobson 1960

*Donors*

Yoav Rogovin 1997

### **Alpha Epsilon (Illinois)**

*The Order of the Escutcheon*

Theodore Brickman Jr 1955

*The Golden Circle*

Richard Morse 1964

David Denis 1945

Ivar Nelson 1952

*The Silver Circle*

#### **Brant Davis 2008**

Bruce Brantingham 1956

Carl Palczewski 1975

Charles Lindrooth 1956

#### **Hunt Blatz 1986**

**John Surufka 2013**

Martin Weinberger 1988

Ronald Anderson 1974

Timothee Bouhour 2013 Z4L

*The Comstock Associates*

Benjamin Heck 2008 Z4L

Donald Edwards 1952

James Hastings 1997

Matt Caddell 2018

Robert Patha 1966

Timothy Schmidt 1989

*The Red Motley Leadership Club*

#### **Anav Pant 2016 Z4L**

Conor Desmond 2009 Z4L

*The Century Club*

Kory Sczurek 2016 Z4L

*Donors*

Adam Peterson

Alan Gan 2019

Alec Wasowicz 2018

Arturo Guerrero 2018

George Schaller V 2016

John Karamichos

Jon Chao 2016

Julius Shapiro

Paul Bennett 1960

Shane O'Brien

### **Alpha Mu (Dalhousie)**

*The Comstock Associates*

Evan Hallward 2014 Z4L

TK McNair 2015 Z4L

*Donors*

Alex Abrams 2016

Alexander Voogjarv 2017

Charly LeMarquand

Jack Bestwick

James Coons 2018

Justin Michitsch 2017

### **Alpha Nu (Claremont)**

*The Order of the Escutcheon*

*The Golden Circle*

Daniel Byun 1997

*The Comstock Associates*

Adam Wasserman 1994

*The Century Club*

James Gonzales 1995

*Donors*

Benjamin Hoyt 2000

### **Alpha Omega (Villanova)**

*The Silver Circle*

Joseph Croasdale 1985

### **Alpha Pi (Virginia Tech)**

*The Golden Circle*

Robert Kackley 1987

*The Silver Circle*

Brian Grozdanoff 1996

Robert Clements 1984

*The Comstock Associates*

Robert Rando 1988

*The Century Club*

Jeffrey vonSeldeneck 1994

Martin Roche 1986

Troy Heiner 1989

*Donors*

Brendan Thompson 2014

Brian Sullivan 1993

Tofique Sikder 2015

### **Alpha Psi (McGill)**

*The Golden Circle*

#### **Barth Gillan 1985 Z4L**

Christopher Campbell 2001 Z4L

#### **Simon Wignall 2000 Z4L**

Stephen Poole 1984

*The Silver Circle*

Anthony Zitzmann 1994 Z4L

James Madon 1984 Z4L

Larry Crossan 1981 Z4L

*The Comstock Associates*

Charles Madon 2010 Z4L

David Fortin 2011 Z4L

#### **John Hopkins-Hill 2015 Z4L**

Michael Szpejda 2013 Z4L

*The Red Motley Leadership Club*

#### **Christopher McGuire 2013**

Jeffrey Mead 2012

Joseph Feldman 2014 Z4L

Lambert Lefebvre 2017 Z4L

Ohannes Torudag 2002

Sean Finnell 2015 Z4L

Wayne Burke 2010 Z4L

*The Century Club*

#### **Carter Brown 2009**

Matthew Tucci 2014 Z4L

Ramzi Cotran 2017 Z4L

Ryan Kates 2016 Z4L

Stefan Prokopetz 2012

Xavier Fortin 2017 Z4L

*Donors*

Alex Massi 2017 Z4L

Alexander Ness 2017

Alexandre Perron 2018 Z4L

Andrew Just 2014 Z4L

Christopher de Courcy-Ireland 1991

Corey Steinke 2018

Daniel Lamothe 2004

David Ness 2016

Dean Perlman 2019

Dominic Spothelfer 2018

Drew Allen 2016

Edward de Courcy-Ireland 2019

Edward Wooten 1993

Etienne Poulin-Leblanc 2020

Gabriel Katzen 2015

Jacob Washkurak 2016

Kyle Gardner 2016 Z4L

Kyle Jacobson 2008

Laurent Lefebvre 2019

Lucas Francioli 2018 Z4L

Luke Visconti 2021

Marco Peghini 2014

Mark Michaels 2019

Matthew Sherrett 2007

Max Adelson 2012

Maxime Aubin 2017

Michael Fishman 2017 Z4L

Neal Rayner 1993

Noah Gillard 2018 Z4L

O'Neil Agossa 2019

Paul Belanger 2004

Philippe Dion

Richard Minzberg 2015

Sebastian Grutter 2016

Seth Zucker 2019

Wyatt Hnatiw 2014

### **Alpha Theta (Waterloo)**

*The Silver Circle*

#### **Michael Ruth 2005 Z4L**

*The Comstock Associates*

### **Christopher Black 2005**

Jeff Cremasco 2003 Z4L

#### **William Evans 2008 Z4L**

*Donors*

Ronald Aric Guité 2003

Ryan Berckmans 2010

### **Beta (Virginia)**

*The Order of the Five-Pointed Star*

George Holcomb III 1976

*The Golden Circle*

C. Jones 1972

S Young 1972

Stephen Busch 1977

W Morris 1973

*The Silver Circle*

Frank McLaughlin Jr 1959

Nicholas Jalowski 1977

William Dordelman 1962

Daniel Pariseau 2012

### **Beta Sigma (Georgia)**

*The Comstock Associates*

Austin Carson 2009 Z4L

### **Beta Tau (Tulane)**

*The 1847 Society*

#### **Stephen Halperin 1984 Z4L**

*The Phi Alpha's Council*

Donald Peters Jr 1981

*The Golden Circle*

Andrew Brain 2013 Z4L

Corey Dunbar Esq 2002 Z4L

Everett Marshall Jr 1990

#### **Ozgur Karaosmanoglu 1984**

#### **William Woldenberg 2007 Z4L**

*The Silver Circle*

#### **Aaron Ronksley 2007 Z4L**

David Nettle 1990

Drake Bathke 2008 Z4L

Jamie Eide 2014 Z4L

#### **Jay Leblang 2004 Z4L**

Joseph Gibaldi 1981

#### **Mark Williams 2002**

Ross Capdeville Sr 2000 Z4L

*The Comstock Associates*

#### **Christopher Bond 2005 Z4L**

Gene Krejci 2003

Kurt Koenigsberger 1994

William Stafford 2005 Z4L

*The Red Motley Leadership Club*

James Tipple 2003

David Litchfield 1980

James Cornblatt 2002 Z4L

#### **Jason Murphy Esq 2002**

*Donors*

Adam Frey 2006

Adam Griego 2014

Andrew Murray 2020

Andrew New 2009

Bill Steves 2006

Brian Coblitz 2002

Christopher Blum 2002

Cody Van Voorhis 2013

Cutter Uhlhorn 2014

Darion Stofira 2006



Michael Brunelle 2017  
Sean Bristow 2016 Z4L  
Theodore Stone Lyons 2015

#### **Epsilon (Brown)**

*The Golden Circle*  
Conrad Herrmann 1982  
Mark Cunningham 1984  
*The Silver Circle*  
Andrew Chlebus 1971  
Christopher Strong 1971  
James Goodwillie Jr 1970

#### **Eta (Yale)**

*The Order of the Escutcheon*  
**Edison Dick Esq 1959**  
*The Order of the Five-Pointed Star*  
David Weild III 1952  
*The Phi Alpha's Council*  
Brian Moloney 1993  
T Stick 1960  
*The Silver Circle*  
George Watson III 1953  
Arthur Draper Jr 1965  
**Ben Grover 2003 Z4L**  
Gordon Gerson 1958  
*The Comstock Associates*  
Erich Cluxton 1965  
*The Red Motley Leadership Club*  
Paul Staelin 1993  
*Donors*  
Brian Whalen 1997

#### **Gamma (Syracuse)**

*The Order of the Five-Pointed Star*  
Edward Guy III 1983  
Robert Lugari 1985  
*The Phi Alpha's Council*  
George Tracy 1985  
James Miller 1949  
Lawrence Baum 1987  
Vincent Cole 1978  
*The Golden Circle*  
Kevin Lastorino 1983  
Alfred Miesemer 1983  
Anthony Breslin Sr 1949  
Kevin Fillip 1982  
Martin Brezner 1981  
Robert Heitsenrether 1985  
Stanley Gorski Jr 1986  
*The Silver Circle*  
Robert Hickey 1983  
Ira Berkowitz 1982  
*The Comstock Associates*  
James Doolittle 1966  
Jonathan Perkins 1979  
Kenneth Knabe 1961  
Randall Schein 1980  
*The Red Motley Leadership Club*  
John Thorson 1966  
*Donors*  
William Sokol 1982

#### **Gamma Epsilon (Georgetown)**

*The Silver Circle*  
Mike Kiritsy 2012 Z4L  
*The Comstock Associates*  
Conor Bennett 2012 Z4L  
Joseph Gowen 2015 Z4L  
*The Century Club*  
Sven Beer 2015  
*Donors*  
Charles Mancini 2016  
Eddie Dual 2015 Z4L  
Jonathan Balloch 2011  
Seth Menghi 2016

#### **Gamma Psi (Guelph)**

*Donors*  
Ryan Shoot 2016

#### **Iota (UC Berkeley)**

*The Order of the Five-Pointed Star*  
William Floyd Jr 1956  
*The Phi Alpha's Council*  
Frederick Duhring 1944  
Peter Newell 1955  
Raymond Pounds 1972  
*The Golden Circle*  
James Gallinatti 1952  
Joseph Gorman Jr 1961  
Minton Newell 1960  
**Ripley Hunter III 1980**  
*The Silver Circle*  
Drew Roberts 1960  
Terence Healey 1986  
William Haines Jr 1959  
*The Comstock Associates*  
Andrew Dellenbach 1991

*The Century Club*  
Robert Weikert 1982  
*Donors*

Andrew Licht 1979  
Matt Tunney 1989  
Samuel Johnson 2018

#### **Iota Alpha (Texas)**

*The 1847 Society*  
**Andrew Nunez 1994**  
**M David Hunter 1980**  
*The Golden Circle*  
**Clay Albers 2002 Z4L**  
Paul Blinn 1984  
*The Silver Circle*  
Alex Morelez 1997 Z4L  
**Dustin Durst 2002**  
Matthew Stoops 1997 Z4L  
**Richard Niels Jr 1982**  
**Robert Edgmon 1988**  
Tommy Stell 2012 Z4L  
*The Comstock Associates*  
Hamilton White 2011 Z4L  
*The Red Motley Leadership Club*  
Gavin Whitlock 2011 Z4L  
**S Jay Maguire II 1992**  
*The Century Club*  
Robert Mueller 1990  
*Donors*  
Lane Marques 2011  
Michael Kline 1989  
Samir Mullick 2003

#### **Iota Delta (UC Davis)**

*The Golden Circle*  
**Richard Hunter 1984**

#### **Kappa (Tufts)**

*The 1847 Society*  
**John Doyle 1976**  
*The Order of the Five-Pointed Star*  
**Joshua Hart 1979**  
*The Phi Alpha's Council*  
Jonathan Curtis 1969  
Michael del Giudice 1982  
*The Golden Circle*  
Gary Older 1975  
Norman Wright 1957  
*The Silver Circle*  
James Poulos 1959  
Lee West 1975  
Paul Murphy 1952  
Philip Swain Jr 1981  
Steven Sorrel 1985  
*The Comstock Associates*  
**James Studdiford 1951**  
Robert Hook 1952  
*The Red Motley Leadership Club*  
Gary Fradkin 1971  
*The Century Club*  
Robert Stricker 1969  
*Donors*  
Richard Rudolph 1985  
James Tetler 2011  
Peter Federman 2010

#### **Kappa Phi (Cooper Union)**

*The Phi Alpha's Council*  
Donald Rotunno 1991  
*The Golden Circle*  
Jeffrey Hersch 1987  
John Barkaus 1988  
*The Silver Circle*  
Scott Lyne 1992 Z4L  
*The Comstock Associates*  
James Philbin 1988  
Theodore Dezvane 1992  
*The Red Motley Leadership Club*  
Josiah Hobson 1993  
*Donors*  
Ho Chul Shin 2010  
Jack Donnellan 2017

#### **Lambda (Bowdoin)**

*The Silver Circle*  
Arya Amirshahi 1990  
*The Comstock Associates*  
Edward Woods 1943  
Albert Marshall 1956  
Kevin Foster 1992  
*The Red Motley Leadership Club*  
Christopher Jackman 1990  
Hubert Shaw Jr 1965

#### **Lambda Psi (Wisconsin)**

*Donors*  
Dale Adney, 2006

#### **Mu (Stanford)**

*Founder's Circle*  
**Leslie Hilger Jr 1965**  
*The Phi Alpha's Council*  
Eric Wente 1973  
*The Golden Circle*  
Edward Culin 1950  
John Wall Jr 1981  
Richard Gould 1959  
*The Silver Circle*  
Warren Cutting 1950  
Richard Raimondi 1974  
Timothy Devine 1957  
*The Comstock Associates*  
Curt Brohard 1974

#### **Mu Pi (Binghamton)**

*Donors*  
Alex Liu 2015  
Jason Allalouf 2008

#### **Mu Theta (Alberta)**

*The Silver Circle*  
Ryan Spotowski 2009 Z4L  
**Timothy DesRoches 2008 Z4L**  
*The Comstock Associates*  
**Richard Shuhany 1968**  
*The Red Motley Leadership Club*  
**James Upright 2008**  
**Max Anderson 2015 Z4L**  
*The Century Club*  
Aaron Zidichouski 2012  
*Donors*  
Chris McNally 2014  
Forrest Zeiser 2007  
John Tod 1957  
Mark Wells 2009

#### **Nu (Case Western)**

*The Order of the Escutcheon*  
**Philip Osborn 1960**  
*The 1847 Society*  
**Bruce Eckstein 1960 Z4L**  
Ronald Miller 1969  
*The Order of the Five-Pointed Star*  
**Ronald Cass 1984 Z4L**  
*The Phi Alpha's Council*  
Burton Judson Jr 1961  
*The Golden Circle*  
Andrew Schroter 1972  
Gary Kelley 1979  
Jack Mowry 1954  
Thomas Meder 1979  
Thomas Van Denberg II 1971

*The Silver Circle*  
Charles Radke 1955  
Valentine Matula 1979  
Charles Stephan 1961  
Gregory Rogers 1980  
Guy Danner 1988 Z4L  
Lloyd Stettler 1962  
Manuel Kanter 1994  
Michael Krejsa 1987  
Paul Stephan 1964  
Robert Snyder 1985  
**Trevor Ilse 2007 Z4L**  
Warner Luoma 1964  
*The Comstock Associates*  
Benjamin Kupka 1973

**Benjamin Meck 2009 Z4L**  
Christopher Pregaman 2006 Z4L  
Curt Howard 1987  
Donald Wilson Jr 1989  
**Franklin Mayse 2007 Z4L**  
Jacob Sullivan 2014 Z4L  
John Kilbane 2017 Z4L  
Jonathan Pastor 2000 Z4L  
Lawrence Wiley 1959  
Matthew Mallet 1999  
*The Red Motley Leadership Club*  
Charles Huddleston II 2009 Z4L  
James Wickert 1950  
John Jones 1991  
Michael Szugye Jr 2005  
*The Century Club*  
Evan Goldring 1996  
Mario LaTragna 1997  
Martin Drabik 1984  
*Donors*

Ben Witoff 2013  
Eric Nied 2011  
Garrett Byrne 2013  
Ian Crowley-Perry  
Jacob Glenn 2002  
Jay Winter Jr 1996  
Kevin Wissner 2005  
Michael Giammo 2010  
Michael Yeager 1989  
Peter Cooke 2012

Phillip Fannin 1983  
Tim Wibowo 2013  
**Nu Delta (Marist)**  
*The Silver Circle*  
Edward Summers 2004 Z4L  
John Maiale 2005 Z4L  
*The Comstock Associates*  
Daniel Caracciolo 2002  
**Isaiah Miller 2014 Z4L**  
*The Silver Circle*  
John Gray 2003 Z4L  
Jonathan Avila 2015 Z4L  
*The Century Club*  
Tony Boyle 2012  
*Donors*  
Timos Pietris 2017

#### **Nu Sigma (Seton Hall)**

*The Golden Circle*  
**Edmund Luciano III 2005**  
**Peter Kern 2005 Z4L**  
**Tyler Boisvert 2010 Z4L**  
*The Silver Circle*  
**Jonathan Ernesto 2004**  
*The Red Motley Leadership Club*  
Darion Smalls 2011 Z4L  
*Donors*  
Blake Willis 2015  
Michael Terranova III 2014  
Nick Scrivanich 2012  
Ryan Binnix 2008  
Timothy Sporcic 2010

#### **Omega (Northwestern)**

*The Order of the Five-Pointed Star*  
Lee Stiles Jr 1948  
Robert Rehak 1971  
**James Carey 1960 Z4L**  
*The Phi Alpha's Council*  
William Sandberg 1970  
*The Golden Circle*  
**Steven Michaels 1991**  
James Cloonan 1952  
John Broan 1957  
John Champlin 1967  
**Phillip Zee 1984**  
*The Silver Circle*  
Joel Metter 1970  
Richard Gerardi 1965  
Richard Kann 1960  
*The Comstock Associates*  
David Beach 1961  
*The Red Motley Leadership Club*  
Wayne Butterfield 1951

#### **Omega Alpha (Chicago)**

*Donors*  
Edwin Abundis 2014

#### **Omicron (Nebraska Wesleyan)**

*The Order of the Escutcheon*

**Robert Busted 1960**

*The Golden Circle*

**Kraig Prange 1993 Z4L**

*The Silver Circle*

Paul Davidson 1958

Brian Ridder 1990

Douglas Kosmicki 1996

Harry Garrett 1959

Jeffrey Hibbler 1996

Larry Ewer 1962

*The Comstock Associates*

Gary Tekolste 1982

Norval Eberspacher 1957

*Donors*

Matt Seems 2013

Ryan Klute 2017

#### **Omicron Epsilon (Princeton)**

*The Order of the Five-Pointed Star*

James Forese 1986

*The Golden Circle*

David Holland 1985

Edward Deutsch 1991

*Donors*

Ralph Manigat 1993

#### **Phi (NYU)**

*The Order of the Escutcheon*

**Gregory McElroy 1970 Z4L**

*The 1847 Society*

Gary Soya 1983

*The Order of the Five-Pointed Star*

**Franklin White 1950**

**John Gebhardt 1969**

**Phillip Gass 2000**

**Robert Pirraglia 1969**

Stuart Moy 1981

*The Phi Alpha's Council*

Richard Frodsham 1962  
Walter Hedley Jr 1951  
**William Reiner 1969**  
*The Golden Circle*  
**Barry Wadler 1983**  
**Charles Krug 1953**  
Janis Kopans 2011 Z4L  
John Perides 1969  
Walter Scott Jr 1953  
*The Silver Circle*  
Aaron Garcia 2008 Z4L  
**Alexander Sharif 2009 Z4L**  
Edgar Camacho 2011 Z4L  
John Haldenwang 1951  
LeRoy Kelley 1948  
Richard Hines 1956  
Robert Boyle III 2008 Z4L  
*The Comstock Associates*  
**Anthony Abbate 2007 Z4L**  
**Christopher Bush 2011 Z4L**  
Edgar Castillo 2009 Z4L  
**Mike Genett 2015**  
**Patrick Cirella 2009**  
Travis Owen 2014 Z4L  
William Klueber Jr 1957  
*The Red Motley Leadership Club*  
John Cintolo 2012 Z4L  
Sergio Lira 2012 Z4L  
*The Century Club*  
Robin Belcher-Timme 2003  
*Donors*  
Daniel Point 2011  
Derek Pahigiannis 2004  
Peter Fitzpatrick 2014 Z4L  
**Ridhish Kankariya 2007**  
Thomas Bredillet 2010

#### **Phi Epsilon (Maryland)**

*Founder's Circle*  
**Stuart Bowers 1981 Z4L**  
**Michael Freiman 1978 Z4L**  
*The 1847 Society*  
Adam Fechter 1991  
*The Order of the Five-Pointed Star*  
Andrew Frisvold 2006  
**George D'Angelo 1978**  
**John Failla 1978**  
*The Phi Alpha's Council*  
**Andrew O'Brien 2002 Z4L**  
**Drew Lyons 1980**  
*The Golden Circle*  
Andrew Bridge 1978 Z4L  
Chad Tompkins 1988 Z4L  
**Christopher Hutter 1989**  
David Fletcher 1986  
**John Brady III 1985**  
*The Silver Circle*  
**Gavriel Swerling 2011 Z4L**  
Alan Dubin 1978 Z4L

David Morris 1982  
Kenneth Gerhart 1978  
Philip Aronson 1975 Z4L  
Scott Weinberg 2009 Z4L  
Steven Freiman 2011 Z4L  
Thomas Parker 2009 Z4L  
*The Comstock Associates*  
Andrew Koines Jr 2011 Z4L  
Dan Degginger 2008 Z4L  
David Young 1982  
**Jason Nguyen 2009 Z4L**  
Michael Sotak 2009 Z4L  
*The Red Motley Leadership Club*  
Adam Freiman 2014 Z4L  
**Joseph Alessi 2011 Z4L**  
Louis Wolff 2014 Z4L  
Lucas Jennings 2015 Z4L  
Michael Frymark 1987  
Nicholas Giuditta III 1985

*The Century Club*  
Mark Liberman 1981  
Brad Jensen 2008  
Garrett Datz 1995  
John Sullivan 1984  
Lee Janofsky 2010  
Matthew Liebowitz 2010  
Scott Schill 2011 Z4L  
*Donors*

Alain Parcan 2010  
Alexander Meiseles 2009  
Bertinus Johnson 2015  
David Blauner 2009  
**Dominic LoPiccolo 2018**  
**Eric Roth 2001**  
Fred Frick Jr 1976  
Henry Du Pont 2013  
Keith Latham 1986  
Logan Stair 2010  
Matt Loughlin 2012  
Thomas Simpson 1982

# CUMULATIVE GIVING CLUB FOOTNOTES

Zeta Psi Thanks Our  
Valued Donors for  
Supporting our Programs

## Founder's Circle

\$100,000

## Order of the Escutcheon

\$50,000

## 1847 Society

\$25,000

## Order of the Five Pointed Star

\$10,000

## Phi Alpha's Council

\$5,000

## Golden Circle

\$2,500

## Silver Circle

\$1,000

## Comstock Associates

\$500

## Red Motley Leadership Club

\$250

## Century Club

\$100

Z4L indicates those brothers who  
are Zete4Life members.

Bolded names indicate members  
of The Zeta Psi Heritage Society

Thank you to the more than 800  
donors who participated in the  
1847 Pledge Campaign.

Donations received  
June 1, 2017 to May 31, 2018

### Phi Lambda (Washington)

*The Order of the Escutcheon*  
**Les Mann III 1973 Z4L**

*The 1847 Society*  
**Patrick Carney 1976**

*The Order of the Five-Pointed Star*  
**Alva CR Roberts 1970**

Richard Elliott 1958

*The Golden Circle*

Bruce Boyd 1969

Donald Leonard 1960

Glen Ulmer 1972

Harrison Smith 1971 Z4L

Jason Conley 1998 Z4L

Joseph Mullins Jr 1960

Mark Anderson 1974

Michael Schonenberg 1981

Thomas Carskadden 1957

*The Silver Circle*

Dudley Pancho 1951

Roger Fricke 1980

**Sims McGrath III 2010 Z4L**

*The Comstock Associates*

James Ochsner 1977

*The Red Motley Leadership Club*

Jerry Wang 2011

*The Century Club*

Bryan Haakenson 1999

Frank Erickson 1970

*Donors*

**Darren Littell 2006**

David Matthews 1982

David Russell 1993

James Doocy II 2010

Jonathon Neilson 2007

Todd Benjamin 1984

Travis Orloff 2005

Tyler Pichette 2018

### Pi (RPI)

*Founder's Circle*

**James Ljunglin 1957**

*The Order of the Escutcheon*

Allen Hobbs 1991

**Edward Etess 1959**

*The 1847 Society*

Robert Leonard 1961

*The Order of the Five-Pointed Star*

Arthur Gajarsa 1962

James Meade 1984

Jay Webb 1961

**Lauck Walton 1984 Z4L**

Robert Sendall 1959

*The Phi Alpha's Council*

Harvey Poppel Jr 1958

**William Bourassa 1971**

*The Golden Circle*

**Edward Kasold Jr 1970**

Frederick Tibbitts III 1991

Paul Pfeiderer 1998

*The Silver Circle*

Eric Warner 1989 Z4L

Patrick Welch 1986

David Puleo 1987

Frank Barone 1955

Frank Harrington 1991

James Monteleone Jr 1989

James Peta Jr 1964

**John Spohn 1981 Z4L**

John Stolzenthaler 1965

Joseph Briggs 1997

Peter Hills 1991

Ronald Liberty 1964

Seth Goodman 1985

Steven Popper 1964

Wesley Hains 1962

*The Comstock Associates*

Joseph Bell 1989

Peter Peta 1967

Stanford Seto 1961

*The Red Motley Leadership Club*

Elton Kaufmann 1964

John Dale 1990

Joshua McWilliam 2002 Z4L

Michael Mao 1991

Russell Herman 2006

Suchin Ratanasirivilai 1991

*The Century Club*

Brian Sparks 1992

Claudio Caballero 1987

Frank Magliato 1973

Gregory Kirby 1988

John DAddieco 1982

John Diego Jr 1995

Kurt Hollasch 1993

Mark Morse 1989

Robert Land 1993

Sandeep Jandial Jr 1995

Scott Thomson 1991

Sean McKenna 1993

Theodore Rubsamen III 1989

*Donors*

Daniel Snyder 2018

Eugene Lauritano Jr 1983

Gregory Grimes 1999

Jeffrey Tumpowsky 1988

Jeremy Colon 2010

John Leatherman 1988

Joseph Novak 2012

Kenneth Semcken Jr 1997

Klaus Ullmann 1997

Kyle Hollasch 1997

Michael Benjamin Jr 1988

Nolin Borrero Jr 2007

Patrick Hughes 2003

Paul Zapustas 2003

Ryan Vasko 2012

Samuel Notaro 2010

Scott Frayler 2000

Sohail Syed 2012

Theodore Papoulas 1987

Theodore van Kessel III 1977

**Thomas Moberg 1971**

Thomas Pickett Jr 1990

Timothy Plante 2010

William Kempf 1988

**Pi Epsilon (Manitoba)**

*The Comstock Associates*

Douglas DuVal 1975 Z4L

*Donors*

Garth Rowsell 1990

### Pi Kappa (Bloomsburg State)

*The Phi Alpha's Council*

**Michael Pillagalli 1971**

*The Golden Circle*

Barry Swartz 1972

*The Silver Circle*

James Warnagiris 1970

Jonathan Marks 1988

**Robert Emert II 1983 Z4L**

Timothy Wagner 1974

*The Comstock Associates*

David Bilger 1976

Joseph Micko Jr 1974

*Donors*

John Schock 2004

Stephen Polzer 1978

Todd McMichael 1985

William Condosta 1991

### Pi Sigma (Penn State)

*Founder's Circle*

**Gary Mootz 1963 Z4L**

*The 1847 Society*

**Richard Breeswine 1987**

*The Phi Alpha's Council*

Frank Miller 1958

Michael Rash 1991

*The Golden Circle*

John Shrum 1961 Z4L

William Andres 1969

*The Silver Circle*

David Miles 1967

John Mellon 1976

Michael Christiansen 1978

Brian Lomasky 1994

**Daniel Florencio 2011 Z4L**

Edmund Roberts 1963

Edward Datemasch 1959

Eric Quedenfeld 1990

**Geffrey Vitale 1997 Z4L**

**James Hampson 2012 Z4L**

**Nick Grassetti 2012 Z4L**

Paul Feigel 1974

*The Comstock Associates*

**Chris Donohue 2012**

Larry Thompson 1969

Paul Campbell 1971

*The Century Club*

Brian Eaton 2006

Charles Anderson 1970

Gary Jones 1969

Timothy Weinstein 1993

*Donors*

Brian Stafford 2000

Charles Gowdy 2011

Edward Kosmowski Esq 1989

Joe Kranick III 2012

Larry Young 1972

**Ryan Vinson 2013**

**Pi Tau (WPI)**

*The Order of the Five-Pointed Star*

**Evan Pressman 1984 Z4L**

*The Golden Circle*

Christopher Grace 1995 Z4L

Christopher Jamieson 1997 Z4L

**James Pavlat 1997**

**Justin Ripley 1999 Z4L**

Lucas Young 1993

Michael Bush 1987

*The Silver Circle*

**Anthony Richardson 2009 Z4L**

Frank Arsenault 2004 Z4L

**Geoffrey McElroy 2001 Z4L**

Geoffrey Zub 1996

Jason Kipp 1998 Z4L

Joshua Brandt 2005 Z4L

**Kevin Norcott 2001 Z4L**

Matthew Houde 2005 Z4L

Michael Castonguay 1978

**Nicholas Moriarty 2003 Z4L**

Thomas Nogueira 2005 Z4L

William Shaw III Esq 2001 Z4L

*The Comstock Associates*

Christopher Gallagher 2003 Z4L

Eric Kenney 2003 Z4L

John Zuena 1988

Kyle Vander Poel 2005 Z4L

Licinio Alves 1985

Marc McCaige 2005

**Michael Burdick 1989**

**Michael Fyrberg 1997**

Ryan Abraham 1998

William Evangelakos 2016

William Howe 2011 Z4L

*The Red Motley Leadership Club*

Bryan Hayes 2000

**Evan Doyle 2013**

Gary Loeb 1977

*The Century Club*

Burke Ryder 2002

Peter Langfield 1984

Quinn Perry 2014 Z4L

Sean Donnelly 2011

*Donors*

Alex Haring 2015

Alex Reeves 2013

Andres Pedraza Rayo 2015

Andrew Galanis 2015

Benjamin Zogby 2018

**Brandon Rubadou 2012**

Brian Wilkinson

Carter Lewis

Cesar Rodriguez 2016

Chris Schramm 2016

Christian Curl

Christopher Hammers 2007

Kevin Simonds 1993  
Kylar Rood  
Mark Boyland 1985  
Mark Merritt 1983  
Mark Schmitt 1985  
Matthew Burrows 2006  
Matthew Hillcock  
Michael Collet  
Michael Cross 2006  
Michael Grisanti 2014  
Michael Xu 2011  
Morris Hosley III 1990  
Patrick Sullivan 1987  
Paul Miller 1987  
Peter Doucette 1992  
Peter Galbo 2013  
Peter Urian 2015  
Phil Andriole 2014  
Rafik Tawadrous 2009  
Robert Scanlin 1986  
Roger Wolfe 1990  
Rohit Khullar 2014  
Roman Lesko 2010  
Ryan Stewart 2002  
Samuel Lundin 2007  
Samuel Shiffman 1990  
Stas Dorokhov 2012  
Sydney Thai 2011  
Thomas Lee 1991  
William Navas 1988  
**Xavier San Miguel 2006**  
Andrew Rust 2013

#### **Psi Epsilon (Dartmouth)**

*The Golden Circle*  
David Springer 1979  
Ray Keate 1976  
Bruce Voelker 1987  
James Maguire 1983  
*The Silver Circle*  
Benjamin Dean 1994  
Michael Salzhauer 1984  
*The Comstock Associates*  
Stanley Stern Z4L  
Thomas Oblak 1988  
*The Century Club*  
Jeffrey Owens 1992  
Benjamin Guidi 2004  
*Donors*  
Bradford McKeown 2001  
Edward Feist 2018  
Eric Hill 1985

#### **Rho (Middlebury)**

*The Golden Circle*  
Daniel Bailey III 1981  
*The Silver Circle*  
Neil Savage 1963  
Jonathan Seamans 1983

#### **Rho Alpha (MIT)**

*The Order of the Escutcheon*  
**Robert O'Donnell 1985 Z4L**  
*The 1847 Society*  
Daniel Wambold 1992  
*The Order of the Five-Pointed Star*  
**James Madsen 1981**  
*The Phi Alpha's Council*  
**Eric Burger 1984**  
C De Vegvar 1985  
*The Golden Circle*  
Roy Cantu 1993  
*The Silver Circle*  
John Phillips 1985  
Akil Middleton 2008 Z4L  
Allen Russell 1982  
Charlie Barr 2013 Z4L  
Chris Rullan 2013 Z4L  
Daniel O'Donovan 2015  
Gregory Grove 1992  
Gregory Stewart 1986  
James Markiewicz 1985  
Ronald Westhauser 1982  
*The Comstock Associates*  
David Newell 2006 Z4L  
Billy Kelleher 2015 Z4L  
Joshua Kramer 1996  
*The Red Motley Leadership Club*  
Christopher Sklarin 1988  
Jared Bibler 1996  
R Winston 1994  
Thomas Popik 1982  
*The Century Club*  
Christian Alonzo 2015  
Daniel Felten 1984  
Duane Horton 1981  
Howard Madnick 1987  
Matthew Britz 1996  
Rory Pfeiffer 2002

#### *Donors*

Aaron VanDevender 2001  
Alejandro Dos Reis 2012  
Alexander Markovits 2016  
Andrew Greenhut 2006  
Anthony Occidentale 2017  
Benjamin Chrobot 2015  
Bennett Wilson 2012  
Charlie Bachmeier 2018  
Chip Whittemore II 2012  
Christopher Hunter 2018  
Christopher McKinney 2017  
Douglas Creager 2001  
Erik Pearson 2015  
Jesse Triplett 2013  
John Gordon 2018  
Justin Kent 2000  
Laurent Charpentier 2010  
Meng Mao 2006  
Michael Heiman 2005  
Obasi Onuoha 2017  
Phil Cherner 2017  
Robert Tran 2018  
Tim Jenks 2013

#### **Rho Epsilon (Harvard)**

*The Red Motley Leadership Club*  
Andrew Arends 1992  
*The Century Club*  
Abraham Meltzer 1988

#### **Sigma (Penn)**

*The Silver Circle*  
Benjamin Allen 1952  
George Gephart Jr 1979  
Richard Pearson 1950  
Sean Gallagher 1994  
*The Comstock Associates*  
**David Sims 1976**  
McBee Butcher Jr 1989  
*The Century Club*  
Richard Caldwell 1996  
*Donors*  
Alexandre Mustier  
Elliott Taylor 2018  
Justin Adams 2009  
Keith Bradner 2018  
Maxwell Abram

#### **Sigma Epsilon**

**(British Columbia)**  
*The Century Club*  
Robert Fuller 1985

#### **Sigma Phi (Illinois - Chicago)**

*The Phi Alpha's Council*  
**Ronald Petri 1975**  
**Ronald Petri 1975**  
*The Golden Circle*  
Peter Caboor 1982  
Walter Walejeski Jr 1975  
*The Silver Circle*  
Steven Murphy 1970  
*The Comstock Associates*  
Barry Gilbert 1969  
Kenneth Piwowar 1971

#### **Sigma Zeta (UC Los Angeles)**

*The 1847 Society*  
Don Nelson 1948  
**John Ellis 1981**  
*The Phi Alpha's Council*  
Lawrence Tannas Jr 1959  
**William Schubert 1965**  
*The Golden Circle*  
Michael Denison 1969  
**Robert Cronyn 1990**  
*The Silver Circle*  
**Anthony Napolitano 2005 Z4L**  
Brandon Jang 2012  
**Dylan Thomas 2004**  
Edward Miller 1952  
*The Comstock Associates*  
Hector Gutierrez-Medina 1978  
Jon English 2006  
*Donors*  
Boris Gutman 2006  
Brett Jensen 2004  
Jeremy Freelove 2003  
Mavrick Goodrich 2008  
Peter Haber 2009  
Raymond Eastwood 1964  
Scott Timpe Esq 2007  
Sean Berquist 2008

#### **Tau (Lafayette)**

*Founder's Circle*  
Dillard Kirby 1981  
**William Buck 1950**

#### *The Order of the Five-Pointed Star*

Fritz Gebhard 1971  
*The Phi Alpha's Council*  
Robert Evans III 1978  
Jefferson Kirby 1984  
Philip Schneider Jr 1954  
*The Golden Circle*  
Robert Bailey Jr 1976  
Joseph Drucker 1977  
Roger Dinella 1984  
Stephen Pryor 1971  
William Magee Jr 1985 Z4L  
*The Silver Circle*  
William Jantzen Jr 1975  
Gerald Escala 1957  
Arthur Bell III 1987  
Brian Wachelka 1993  
Bruce Hartlein 1979  
E Green III 1954  
Michael Zirinsky 1995  
Nils Berglund 1973  
Philip Duvall 1981  
Randall McHugh 1985  
Richard Meer 1963  
Robert Beavins 1958  
*The Comstock Associates*  
Richard Broders 1975  
Richard Rathemacher 1954  
Robert Thurber 1985  
*Donors*  
Anthony Conrad III 1972  
Colin Feehan 2003  
Gregory Silverman 2006  
Marc Teitelbaum 2015  
Richard Marrano 2015

#### **Tau Delta (Lehigh)**

*Founder's Circle*  
**David Busacca Esq 1973 Z4L**  
*The Golden Circle*  
Donald Mayer-Brown 1977  
Donald Vansyckel 1973  
Mark Goehring 1976  
Thomas Smith 1978  
*The Silver Circle*  
Arthur Cader 1962  
*The Comstock Associates*  
George Kuczynski 1974  
*The Red Motley Leadership Club*  
Caesar Gorski Jr 1979  
Stephen Politziner 1997

#### **Tau Gamma (Purdue)**

*The Order of the Escutcheon*  
**Daniel King 2000**  
*The Order of the Five-Pointed Star*  
**John Long 1983**  
*The Phi Alpha's Council*  
Duane Jaeger 1999  
*The Golden Circle*  
John Simson 1976  
Nathan Renie 1999  
*The Silver Circle*  
**Gawin Pukchareon 2013 Z4L**  
*The Comstock Associates*  
Anthony Jennings 1993  
*The Century Club*  
**Daniel Luby 2014**  
Matthew Simpson 1989  
Paul-Michael Butler 1997  
*Donors*  
Luke Skinner 2012

#### **Tau Theta (Ontario Tech)**

*The Silver Circle*  
Anthony Aprile 2011 Z4L  
*Donors*  
Christian Nissen 2017  
Neil Mawdsley 2012

#### **Theta (Connecticut)**

*Founder's Circle*  
**Douglas Donaldson 1972 Z4L**  
*The Order of the Escutcheon*  
**Peter Slomianjy 1976**  
*The 1847 Society*  
**John Stelmach 1975**  
**Steven Rogers 1973 Z4L**  
*The Order of the Five-Pointed Star*  
**Robert Kravacs Jr 1977 Z4L**  
**William Ruggles 1974**  
*The Golden Circle*  
Gerald Guilbeault 1982  
James Conklin 1970  
*The Silver Circle*  
George Thomson 1963  
John Downey 1972  
Keith Nichols 1967  
Michael Joyce 1973 Z4L

Sheldon Katz 1977  
William Dripchak Jr 1970  
*The Comstock Associates*  
Jeffrey Sager 1972  
Elbert Smith 1965  
Harvey Beinstein 1964  
Michael Frechette 1992 Z4L  
Ronald Niederwerfer 1975  
Scott Chadwick 1984  
Thomas Stevens 1969  
*The Red Motley Leadership Club*  
Russell Bowen 1964  
*The Century Club*  
Edward Donofrio 1983  
George Ohanesian 1971  
Hugh Schweitzer 1987  
*Donors*  
Al Smith 1965  
Brian Kolm 1996  
Gerald Buckley 1968  
John Greges 1995  
John Scata 1990  
Kyle Fortin 2013  
Robert Kelley Jr 1975

#### **Theta Eta (Brook)**

*The Comstock Associates*  
**Christopher Arnold 2011 Z4L**  
*The Red Motley Leadership Club*  
**Steve Adkins 2014 Z4L**  
*The Century Club*  
Steven Voulgaris 2016

#### **Theta Omicron (Trinity)**

*Donors*  
Andrew Nagle 2013  
Brian Cronin 2016 Z4L  
Cian Mulville 2014  
Sean O'Keefe 2016 Z4L  
Tim Blythman 2016 Z4L

#### **Theta Phi (Western)**

*The Order of the Escutcheon*  
**James Donald 1982 Z4L**  
*The Golden Circle*  
Tom Trimble 1983 Z4L  
*The Comstock Associates*  
Alex Wijnbergen 2014 Z4L  
*The Red Motley Leadership Club*  
Daniel Weryha 2013 Z4L  
*The Century Club*  
Jonathan Wood 2011 Z4L  
*Donors*  
Ronald Mott 1986

#### **Theta Psi (Queen's)**

*The Silver Circle*  
Alexander Martino 2011 Z4L  
*The Comstock Associates*  
Jeffrey Soehn 2011 Z4L  
*The Red Motley Leadership Club*  
Ilan Bloom 2009 Z4L  
*Donors*  
Vlad Ianceanu

#### **Theta Xi (Toronto)**

*The Order of the Five-Pointed Star*  
**Tony Hodgson 1983 Z4L**  
*The Phi Alpha's Council*  
**J. Corey Nicholson 1979 Z4L**  
**Peter Wijnbergen 1986**  
**Robert Mather 1969**  
**Simoneon Brigden 1982 Z4L**  
*The Golden Circle*  
**Cameron Wasdell 1983 Z4L**  
**Dave Stiff 1983 Z4L**  
William McNair 1977 Z4L  
*The Silver Circle*  
David Walker Jr 1988 Z4L  
Gregory Cusimano 1979 Z4L  
**Jeffrey Ball 1979 Z4L**  
**Roderick Macdonald 1983 Z4L**  
Thomas Cowan 1978 Z4L  
**William McKnight 1980**  
*Donors*  
Bradley Macdonald 1996  
Chris Reid 2009  
Paul Myles 1978  
Travis Coulter 2012  
William Haw 1979

#### **Upsilon (North Carolina)**

*The 1847 Society*  
**Earl Johnson Jr 1954**  
*The Golden Circle*  
W Hargrove III 1969  
James Long 1962  
*The Silver Circle*  
James Barber 1967

James Black III 1968  
Joel Williams 1990  
John Wiggins III 1980  
Richard Macon 1986  
Turner Bunn III 1963  
*The Comstock Associates*  
Hugh Hussey III 1972  
*Donors*  
Samuel Thompson Jr 1999

#### **Upsilon Mu (Massachusetts)**

*The Phi Alpha's Council*  
John Hendry 1977  
*The Silver Circle*  
Thomas Cahill 1978  
Thomas Chew Jr 1989  
*The Century Club*  
Scott Sherman 1980  
Michael Coughlan 1979  
Robert Bosselman 1987  
*Donors*  
Benjamin Daskal 2007  
Craig Pomroy 1996  
**Jonathan Agresta 2005**

#### **Xi (Michigan)**

*The Order of the Escutcheon*  
**Estate of Ralph Rumsey 1965**  
*The Order of the Five-Pointed Star*  
Irwin Deister Jr 1951  
*The Phi Alpha's Council*  
Denton Hanford 1959  
**Donald Canham 1970**  
John Schippel 1956  
William Handorf 1966  
*The Silver Circle*  
David Lohrmann 1970  
Jack Westman 1949  
David Frayne 1955  
Donald Cebulski 1963  
John Lightfoot 1959  
Michael Gillman 1961  
Richard Hamilton 1952  
Terry Blaney 1962  
*The Comstock Associates*  
George Todoroff Jr 1978  
*The Red Motley Leadership Club*  
Lawrence Michalak 1980  
*Donors*  
Alex Pietroski 2016  
Brian Samimi  
Dan Sicular 2016  
Elijah Segraves  
Jason Hollingsworth 2009  
Joseph Carpenter  
Justin Rogers 2018  
Kenneth Brown 1966  
Kevin Ziegler 2016  
Kip Schimmoller 2018  
Marshall Jones 2013  
Matthew Miller 2016  
Michael Berland 2009  
Michael Munoz 2013  
Nick Warminski 2017  
Patrick Bowles 2007  
Paul Christ 2018  
Phil Davlik 1991  
**Robert Trombley 2007**  
Zac Boyd 2010

#### **Zeta (Williams))**

*The Order of the Five-Pointed Star*  
William Moore 1958  
*The Comstock Associates*  
John McElroy III 1952  
*The Red Motley Leadership Club*  
Frank Ketcham 1934 Z4L

#### **Friends**

*Order of the Escutcheon*  
**MacLane Key Esq 1996 Z4L**  
*The Silver Circle*  
Rebecca Napolitano 2014 Z4L  
*Red Motley Leadership Club*  
Edward Kirkin  
*The Century Club*  
Jo Adams

If your name has been omitted or you would like to make a donation, please contact Barth Gillan, gillan@zetapsi.org.

Non-Profit Org  
U.S. Postage  
Paid  
W. Caldwell, NJ  
Permit #55

**What you  
leave behind  
is not what  
is engraved  
in stone  
monuments,  
but what is  
woven into  
the lives of  
others.**

– Pericles



The Heritage Society is Zeta Psi's planned giving society. Established in 1987 as part of Zeta Psi's 150th anniversary celebration, the Heritage Society now has over 400 members – people who are committed to the future of Zeta Psi

There are many ways to make a planned gift to Zeta Psi (both in the United States and in Canada). If you have already made plans to support Zeta Psi in your will, or if you would like more information on how to make a planned gift, please contact Barth Gillan ([gillan@zetapsi.org](mailto:gillan@zetapsi.org) or (845) 735-1847 x317).

## **Save The Date**

### **Heritage Society Reception**

August 17, 2019

Renaissance Baltimore Harborplace  
202 E Pratt St., Baltimore, MD

**International  
Headquarters**

15 South Henry St., Pearl River, NY 10965  
Office: 845-735-1847 | [zetapsi.org](http://zetapsi.org)

**ZΨ**